



3L ELECTRONIC CORPORATION



*NO BEST
ONLY BETTER*



GLOBAL MARKET



3L ELECTRONIC CORPORATION

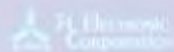
QUALITY ASSURANCE



INNOVATION



3L Electronic Group Holdings Limited Profile



NO BEST ONLY BETTER





3L ELECTRONIC CORPORATION

Company History

- 1977: Founded by Mr. Yung-Chih Liu and Y.T. Liu in Taipei, Taiwan.
- 1989: Established the 1st Mainland China factory, 3L Electronic (China) Ltd (3LM), in Zhuhai.
- 1990: Established 3L Electronic Corp. (Hong Kong). (3LH).
- 1991: Established 3L Electronic Corp. (U.S.A)(3LU) as North American warehouse and logistic controlling center. Incorporated G-TEP, meanwhile, and formed 3L Global Co. (3LG) for handling North American business.
- 1996: ISO 9002 certificated . Established 2 sub-factories. (3LZ, 3LN)
- 2000: ISO 9001 certificated.
- 2002: Established 3L Electronic (Zhong Shan) Corp. (3LF) for three factories (3LM, 3LN & 3LZ) integration.
- 2003: Established 3L Electronic Corp. Su Zhou Branch (3LS) and built up an invested exclusively 2nd factory for domestic market (Zhong Shan Factory, 3LC).
- 2004: Complying the Balance Score Card (BSC) Management; Adopting the automatic winding facilities for chips and planar xfmrs production lines.
- 2005: Acquired SGS certificates ISO9001:2000, ISO 14001:2004, GPMS Rev.1 2005. & the China Grade A Enterprise; Established 3L Plating factory (3LD). Developing low profile Ultra Thin Power Choke lines.
- 2006: Built up a new plant 26,666 M² named Henry Electronic. Corp. (3LQ). for expanding production capacities towards China domestic market. Established Tainan office (3LN).
- 2007: Start-up of Henry Electronic Corp. (3LQ) and Hubei Factory (3LB), reorganized the company and set up the Group Holding Co., Ltd.
- 2008: Sony GP certificated. Established Sanle Electronic Factory for domestic market; established 3L Electronic (HK) Ltd.



**3L ELECTRONIC
CORPORATION**



Vision

- ❑ Finance: Keeping growth in sales volume & market share; benefit all 3L customers, suppliers, employees and investors.
- ❑ Customer: Always listening the VOC (Voice of Customers) and fulfilling customers' needs.
- ❑ Process: Continuously improving CSF of QCDS and providing the best products and services.
- ❑ Learning: Keeping individual/ organizational growth and creating competitive advantages.

NO BEST ONLY BETTER





**3L ELECTRONIC
CORPORATION**

Strategies

- ✦ We specialized the development of reliable SMD related Coil products with wide range, excellent performance, zero-defect, and long life cycle to meet global market demands.
- ✦ We insist *High Precision, Less Tolerance; Cost Competitiveness; High Efficiency and Production Flexibility* Policies and apply new technologies continuously to accomplish the goal of BSC 4 chapters " Finance, Customer, Process & Learning."
- ✦ We continuously improving our production process & quality to stand on FMEA, PPAP, APQP,MSA,SPC, Gauge R&R, 8D, 5S, and execute the requirements of ISO 9001 & ISO/TS 16949 & Six Sigma standards.

NO BEST ONLY BETTER



3L ELECTRONIC CORPORATION

Group Organization



**三禮電子集團控股有限公司
(3L Electronic Group Holdings Limited)**

三禮電子中國控股有限公司
(3L Electronic CHN-Holdings Limited)

三禮電子台灣控股有限公司
(3L Electronic TWN-Holdings Limited)

三禮電子美國控股有限公司
(3L Electronic US-Holdings Limited)

三理國際貿易有限公司
(3L Electronic International Trading Limited)

3L Electronic (HK) Ltd.

中山市三禮電子有限公司
(3L Electronic (Zhong Shan) Co., Ltd.)

和瑞電子(中山)有限公司
(Henry Electronic (Zhong Shan) Ltd. Co.)

中山市三樂電子有限公司

三禮電子器材股份有限公司
(3L Electronic Corp.)

三禮電子美國分公司

3L Global Co.

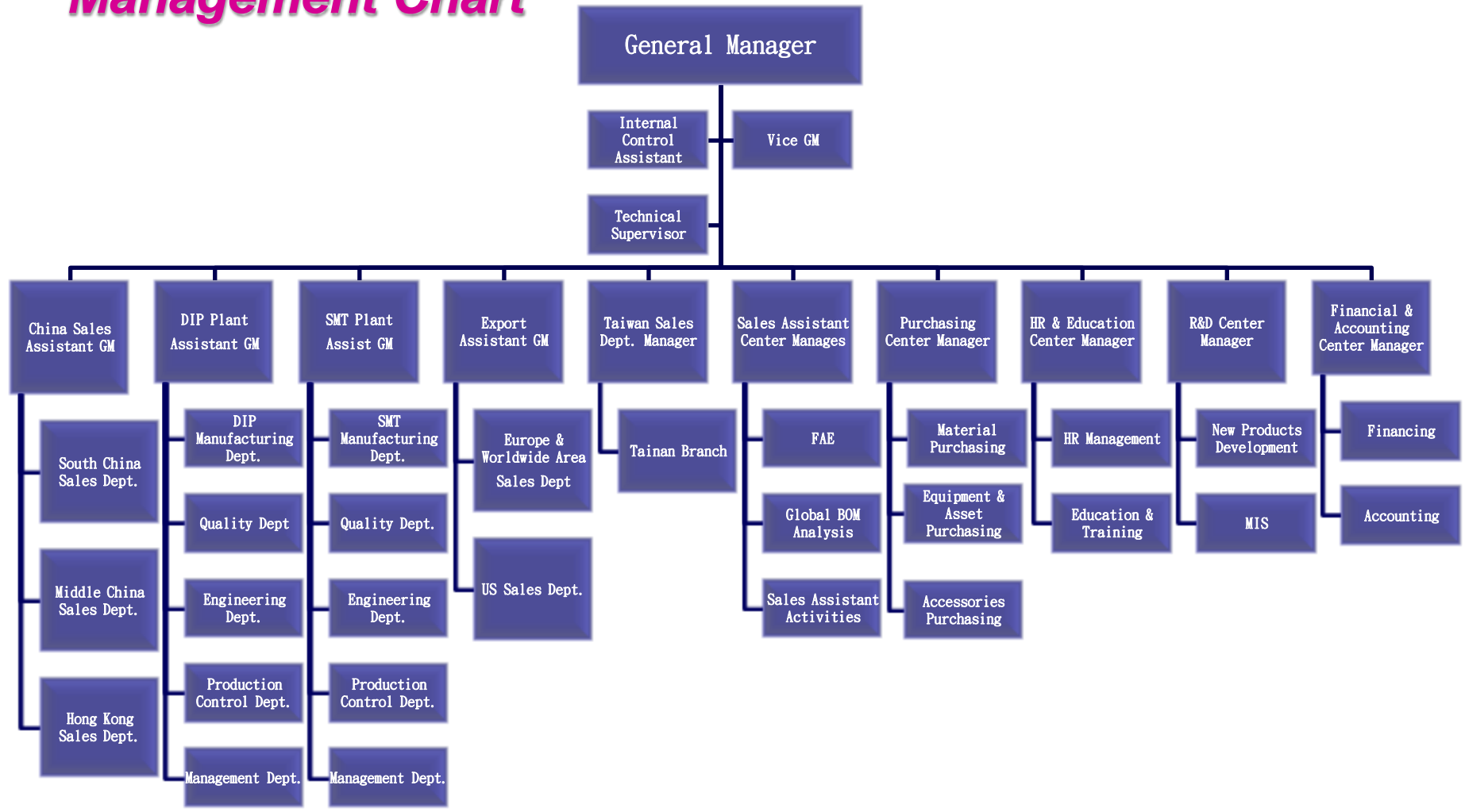
NO BEST ONLY BETTER





3L ELECTRONIC CORPORATION

Management Chart



NO BEST ONLY BETTER





3L ELECTRONIC CORPORATION



Number of Employees:

Management:20 Design/Engineering/R&D:90 Production:2300
QA: 80 Procurement:15 Production Controller:40 Sales: 60
Accounting:10 Personnel & Training:15 General affairs:60
Total:2690 (Statistics Date: May., 2008)

Total Floorage of factory, office & warehouse :

Taipei Office: 800 M²
Tainan Office: 800 M²
L.A. Office: 500 M²
Florida Office: 400 M²
Zhongshan Factory I: 27,760 M²
Zhongshan Factory II: 39,800 M²
Hubei Factory: 2000 M²
Suzhou Office: 80 M²
Hong Kong Office: 100 M²





3L ELECTRONIC CORPORATION

Zhongshan China Factory I (3LF)



- © In Dec. , 2000, Nanlang Construction Design Institute of Zhongshan made the project chart for an area of 20,000 square meters. The total construction area is 27,760 square meters.
- © This factory began to be built On Feb.1, 2001 and opened on Oct.1, 2002. The products made at this factory are 100% exported to overseas countries.
- © The factory could accommodate the staff of 1,000; The total investment amount is USD\$ 11,000,000.

NO BEST ONLY BETTER



3L ELECTRONIC CORPORATION



Zhongshan China Factory II (3LQ)



- © In Mar. , 2006, Nanlang Construction Design Institute of Zhongshan made the project chart for an area of 26,900 square meters. The total construction area is 39,800 square meters.
- © This factory began to be built On Jul.1, 2006 and opened on Jul, 28 2007. The products made at this factory are exported to overseas countries and sold in domestic market.
- © The factory could accommodate the staff of 2,000; The total investment amount is USD\$ 7,000,000.

NO BEST ONLY BETTER





3L ELECTRONIC CORPORATION



Inspection Device: High Frequency Network Analyzer,

High Current LCR Meter etc.



NO BEST ONLY BETTER





3L ELECTRONIC CORPORATION

*Reliability Unit: for thermal shock test,
temperature & humidity test, dropping test etc.*



NO BEST ONLY BETTER





3L ELECTRONIC CORPORATION



Analyzer Detecting Equipment: Metallurgical Microscope, Hi-Pot Test, Hazardous Material Analyzer, Film Thickness Tester, Spectrum Analyzer



NO BEST ONLY BETTER





3L ELECTRONIC CORPORATION



THT Series



NO BEST ONLY BETTER





3L ELECTRONIC CORPORATION



SMT, Multilayer



NO BEST ONLY BETTER





3L ELECTRONIC CORPORATION



SMT, Multilayer



NO BEST ONLY BETTER





3L ELECTRONIC CORPORATION

Product Development

				SI Sensor Inductor	SMB	SMTDRS SMT Power Inductors	SMTPI 1203-1205
				RL66 Radial leaded Inductors	SMTDRR1 SMT Power Inductors	SMTDRR1 SMT Power Inductors	SMTPI 1354
				TBC Luminous OSC Coils	SMTDRR1 3D/4D/5D/6D Shielded SMT Power Inductor	SMTDRH 0520/0530 SMT Power Inductors	SMTDR 31
PKB Fixed Inductors	SMBM5H SMT Wide Band Chokes	TCT Common-Mode Choke		SMTDRR1 63B/74B 105B/125B Shielded SMT Power Inductor	SMTDRR1 122 SMT Power Inductors	SMTDRH 0520/0530 SMT Power Inductors	SMTDR 0490 Time
TC Wound Toroids	DRH High Current Chokes	SMB Surface Mount Beads		SMD 32 & 45 56 & 63 Molded Wound Chip Inductors	SMTSDR SMT Chip Chokes	SMDWCM SMT Power Inductors	SMD 2520V/2520VP... TYPE
SC Air Core Inductors	MD Insert Molded Coils	SMTDR 32/43/54/73/75/ 104/105 SMT Power Inductors	LF Line Filters Toroids	SMTDRH SMT Power Inductors	SMTDR 4D06/08 5D11/13 SMT Power Chokes	SMW CB / LB TYPE	
FC High Current Filter Chokes	IFT General I.F. Adjustable Inductors	TR Trigger Coils	LFU Line Filters Toroids	SMTDFSR Shielded Power Chip	SMBCF SMBCF - 3216	BRI 2D12/15/18 TYPE	
PK Peaking Coils	FS Ferrite Shielded Inductors	WBRH Ferrite Beads	LFD 707010 Data Line Filter	SMTSC Surface Mount Spring Coils	LTCC LTCC - LCU	BRI 3D12/15/18 TYPE	
VC Power Line Filter Chokes & R.F. Inductors	PKH Flat Coils	BL Balun Coils	SMDCHGR & SMDFSR 1008 Open-Type SMD Inductors	SMTDR 0402 & 0804 0810 & 1206 SMT Power Inductors	SMTTC SMT Power Chokes	BRI 4D15/18 TYPE	
EC Conformal Coated Inductors	MF Molded Power Line Chokes	WBR6H Wide Bands	LFD Data Line Filter	TB Wound Toroids	SMTIF SMT Common Filter	SMTSDR 322520S	
					SMT ST1/ST2 ST3/ST4 SMT Toroids Power Chokes	SMTCHGRS 0402	

1977~1980

1981~1985

1986~1990

1991~1995

1996~2000

2001~2005

2006~2010



3L ELECTRONIC CORPORATION

Capacity



Products	Capacity (Pcs) / Month
Axial Leaded Inductors	30,000,000
Radial Leaded Inductors	25,000,000
Molded Coils & IFTs	10,000,000
Toroid Coils/Transformers	10,000,000
SMT Power Chokes	25,000,000
SMD Winding Chips	23,000,000
Other Coils&Inductors	2,000,000
Total, based on 2007 forecast:	125,000,000

NO BEST ONLY BETTER





3L ELECTRONIC CORPORATION

3L Coils Sales Network

三禮電子全球銷售網



● FACTORY AND OFFICE
● AGENT



3L ELECTRONIC CORPORATION



Main Overseas Agents

- Electronic Market Padova Srl (Italy) The logo for Electronic Market Padova Srl features a stylized black 'em' with a blue arrow pointing upwards and to the right. Below it, the text 'electronic market padova s.r.l.' is written in a small, black, sans-serif font.
- ECM Electronics Ltd. (U. K.) The logo for ECM Electronics Ltd. features a red sine wave on the left and the letters 'ECM' in a bold, black, sans-serif font on the right. Below 'ECM', the word 'ELECTRONICS' is written in a smaller, black, sans-serif font.
- Total Frequency Control Ltd (U. K.) The logo for Total Frequency Control Ltd features the letters 'TFC' in a bold, black, sans-serif font, with a colorful rainbow gradient behind the letters.
- RUTRONIK Elektronische GmbH The logo for RUTRONIK Elektronische GmbH features a grey square icon with a white grid pattern on the left and the word 'RUTRONIK' in a bold, blue, sans-serif font on the right. Below 'RUTRONIK', the word 'EUROPE' is written in a smaller, blue, sans-serif font.
- Cidev Agencies (1973) limited (Israel) The logo for Cidev Agencies (1973) limited features a stylized blue 'C' and 'V' with a white arrow pointing upwards and to the right. Below it, the word 'CIDEV' is written in a small, blue, sans-serif font.
- Carinda International Pty Ltd (Australia) The logo for Carinda International Pty Ltd features the word 'CARINDA' in a bold, white, sans-serif font on a blue rectangular background. Below it, the text 'INTERNATIONAL PTY LTD' is written in a smaller, white, sans-serif font.
- Microsource CC (South Africa) The logo for Microsource CC features a white sine wave on a black circular background.

NO BEST ONLY BETTER





3L ELECTRONIC CORPORATION

Main Domestic Customers

● 鴻海精密		● 技嘉科技		● 群光電子	
● 緯創資通		● 金寶電子		● 遠見科技	
● 智灝科技		● 美齊科技		● 廣寰科技	
● 仁寶電腦		● 陞泰科技		● 憶聲電子	
● 台達電子		● 華邦電子		● 錄霸股份	
● 正崙精密		● 香港商恩倍福		● 環隆科技	
● 美上美股份		● 廣達電腦		● 聲寶股份	
● 光寶科技		● 神腦國際		● 偉創力	
● 兆赫電子		● 碩天科技		● 閱泰企業	
● 亞旭電腦		● 台灣蒂雅克		● 德律科技	
● 高效電子		● 全一電子		● 航欣科技	
● 信邦電子		● 華碩電腦		● 羅技電子	
● 東元電機		● 友旺科技		● 盛達電業	



3L ELECTRONIC CORPORATION

Main Overseas Customers



● Archos S. A.		● NEC		● Sanyo	
● Chamberlain		● NEC-Tokin		● SCI	
● Densei		● SCHAFFNER		● S At1.	
● ERICSSON		● PPC		● EMERSON	
● GE		● HYUNDAI		● Astec	
● Genius		● JC		● Sony	
● HPM		● Ricoh		● Tabuchi	
● HP		● RKC		● Takacom	
● Jabil		● Rockford		● Tamura	
● LG		● Rutronic		● Texas	
● Life Fitness		● GE CONSUMER		● YAMAHA	
● Microsoft		● Samsung		● Matsushita	

NO BEST ONLY BETTER

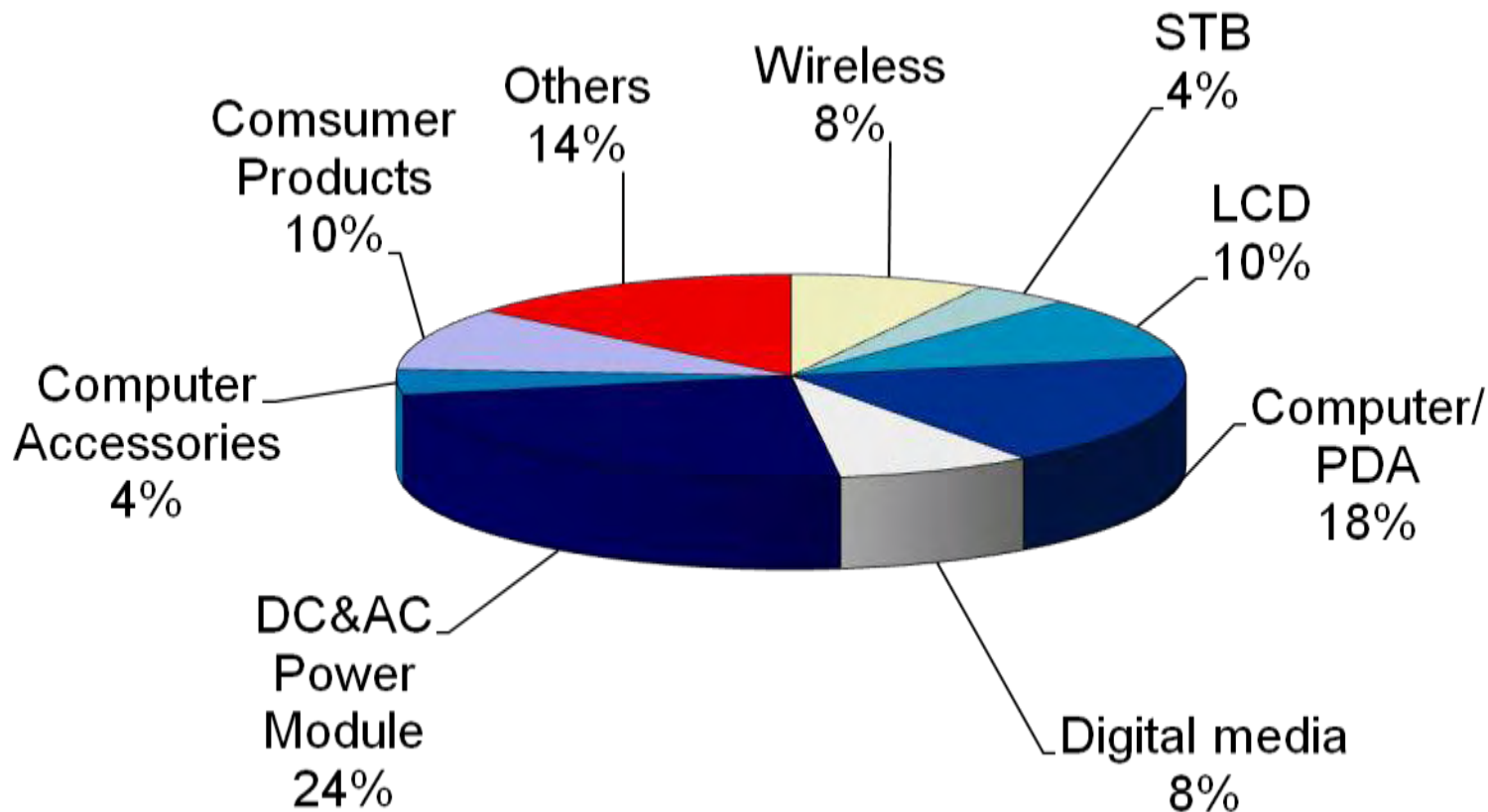




3L ELECTRONIC CORPORATION



Product Applications



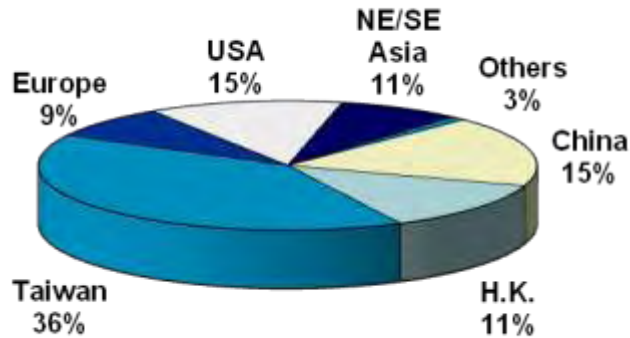
NO BEST ONLY BETTER



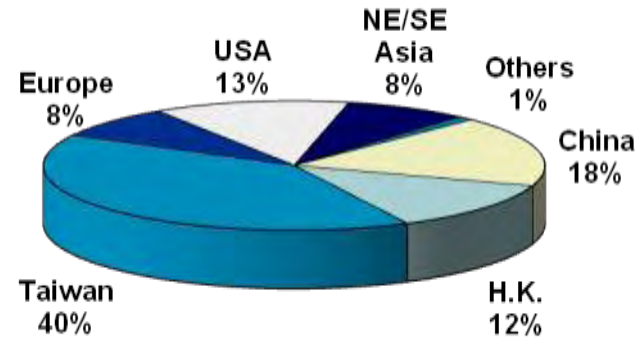


3L ELECTRONIC CORPORATION

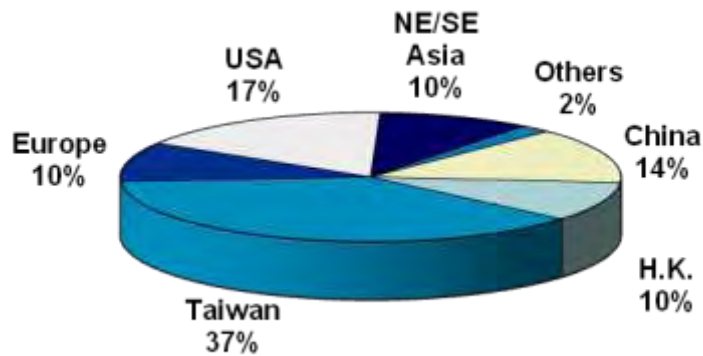
Market Distributions



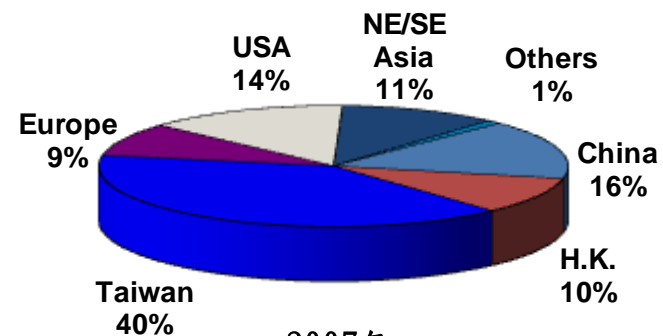
2004年



2005年



2006年



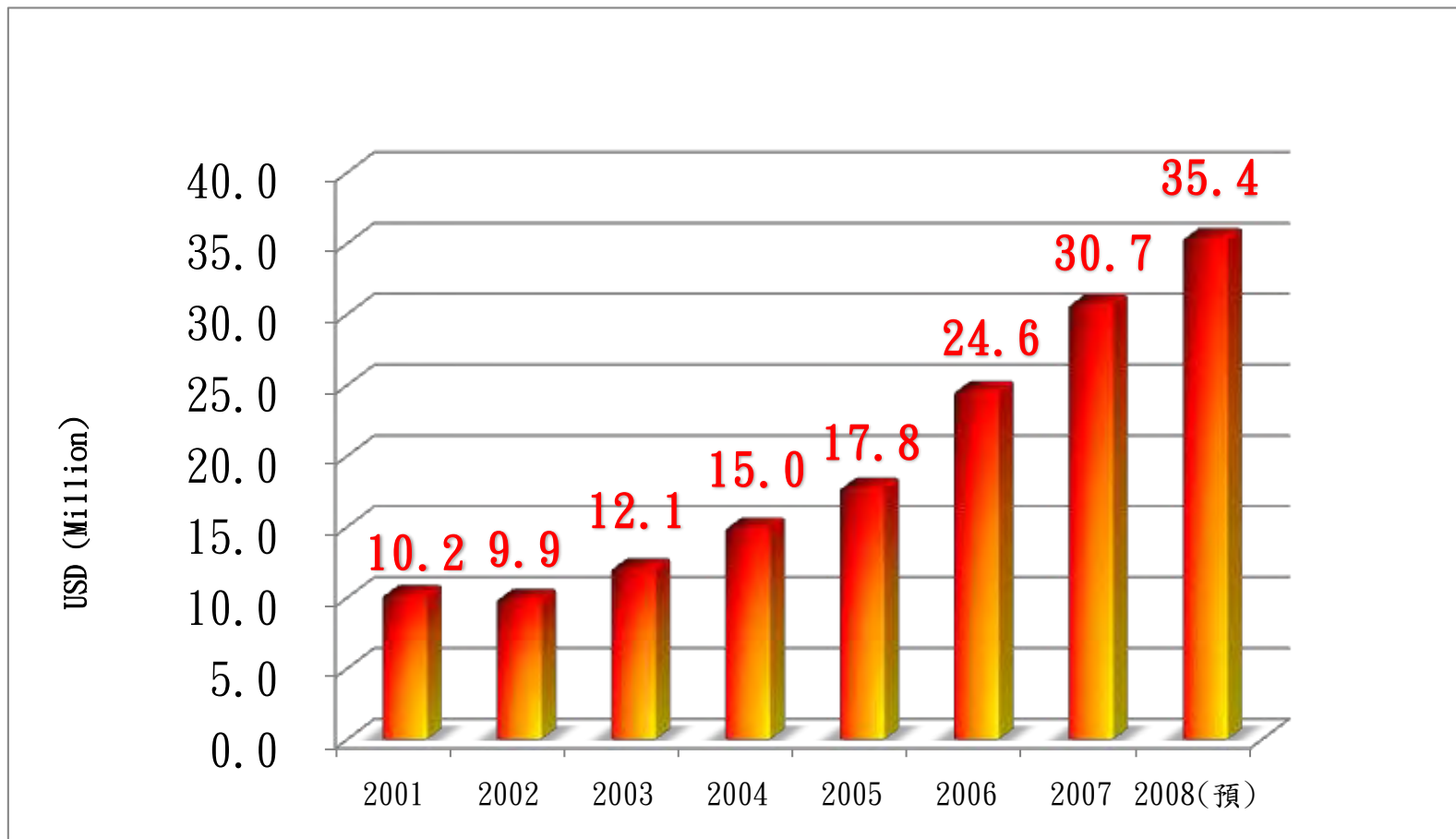
2007年

NO BEST ONLY BETTER





Sales Performance





3L ELECTRONIC CORPORATION

Certificates

ISO 9001, 14001, GPMS, ASUS Certificate



NO BEST ONLY BETTER



**3L ELECTRONIC
CORPORATION**



Competitive Advantages

- ❖ **The most focused inductor manufacturer:** With 30 years of experience in making inductor, the average employment period of management staff of team leader exceeds above 8 years; section chief level and above are more than 10 years.
- ❖ **The most fast response:** Drawing, tool, accessory and molding can be built by the factory, this can make us to meet customer's requirement in fastest speed.
- ❖ **Wide & professional application:** 3L can provide the answer to all the magnetic material series passive components.
- ❖ **World Wide customer support :** Our sales teams and agents spread worldwide and fast supporting our customers' demand.

NO BEST ONLY BETTER





3L ELECTRONIC CORPORATION



3L as Your Prime Supplier

- ❖ **The meticulous quality (Q):** Perform strictly Six Sigma management tools and ISO 9001; following the analyzing tool of Six Sigma, Inspecting the quality from the smallest problem and propel the continuous improvement, put *Strict & Accurate* as the top principle.
- ❖ **The lowest cost (C):** 3L Electronic Corp. keep long-term co-operation with most competitive suppliers and enjoy the advantage of professional automatic scale production that could assure lowest costs.
- ❖ **The shortest production period (D):** .3L may support 22hrs/7days a week production and has enough manpower and equipment to fulfill customer's urgent needs.
- ❖ **The customer-oriented service (S):** SOP (Customer Oriented Process) is 3L's principle to start customer service, by which to meet customer's requirement and interest.

NO BEST ONLY BETTER

