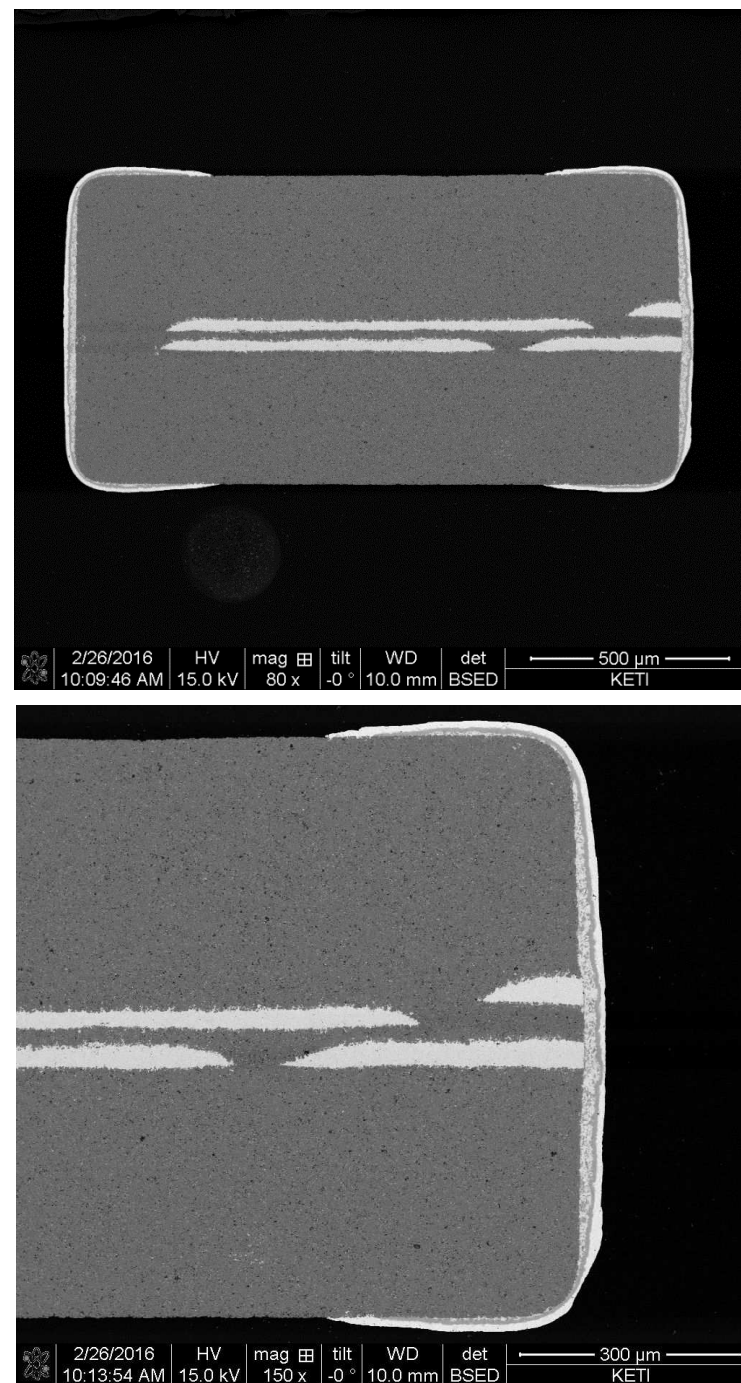
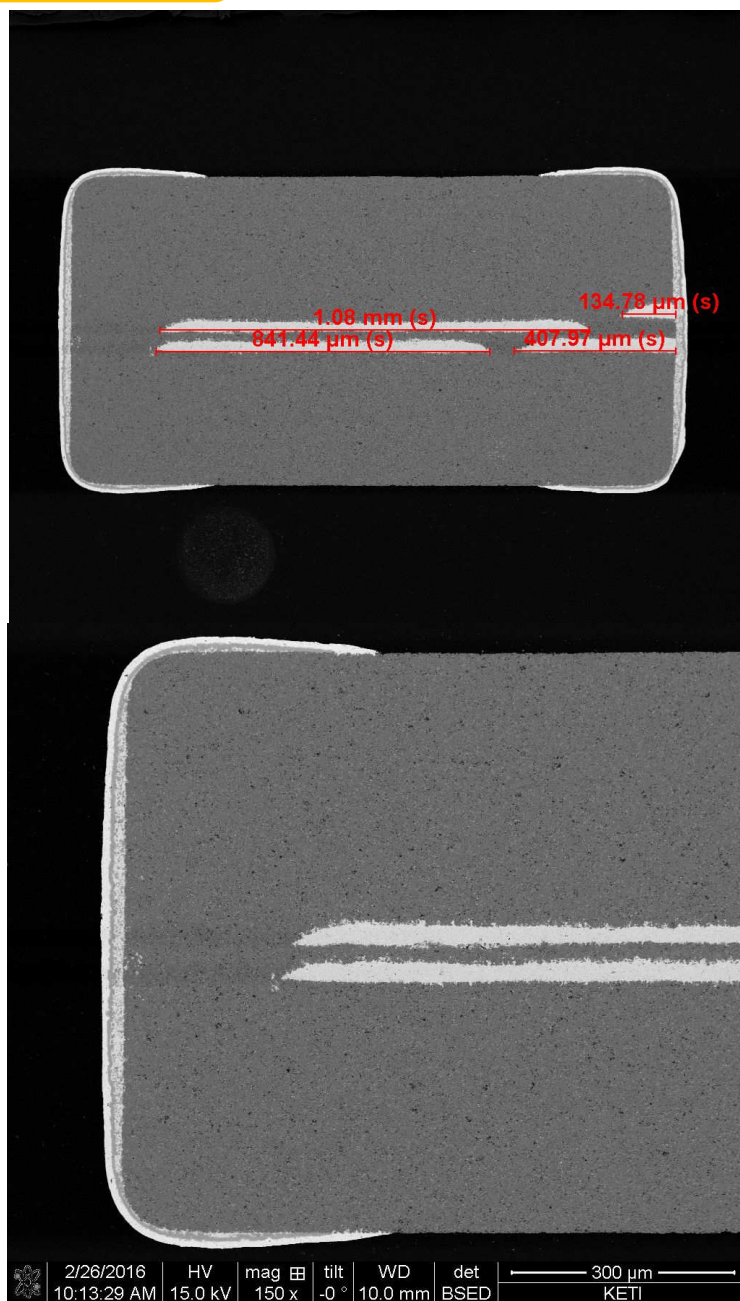


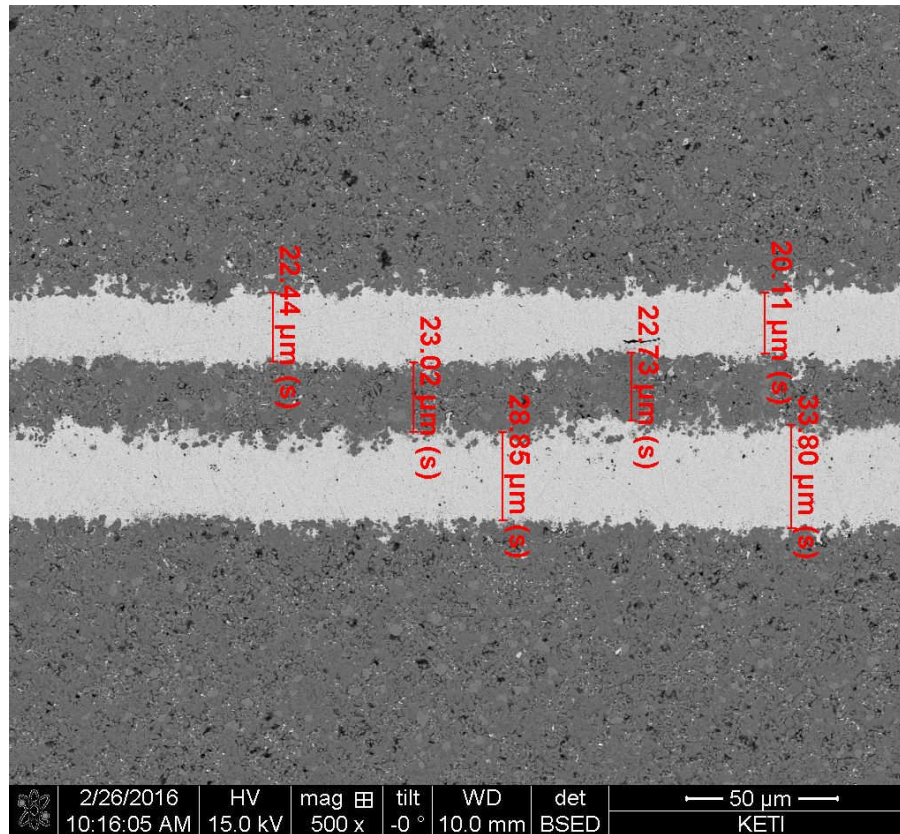
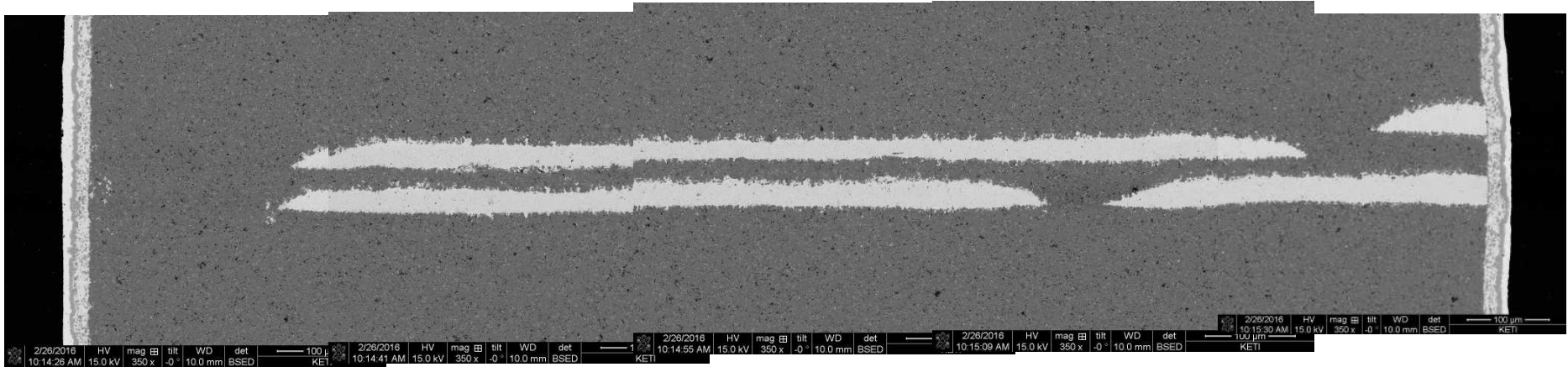
III. SEM analyses



A社 1608

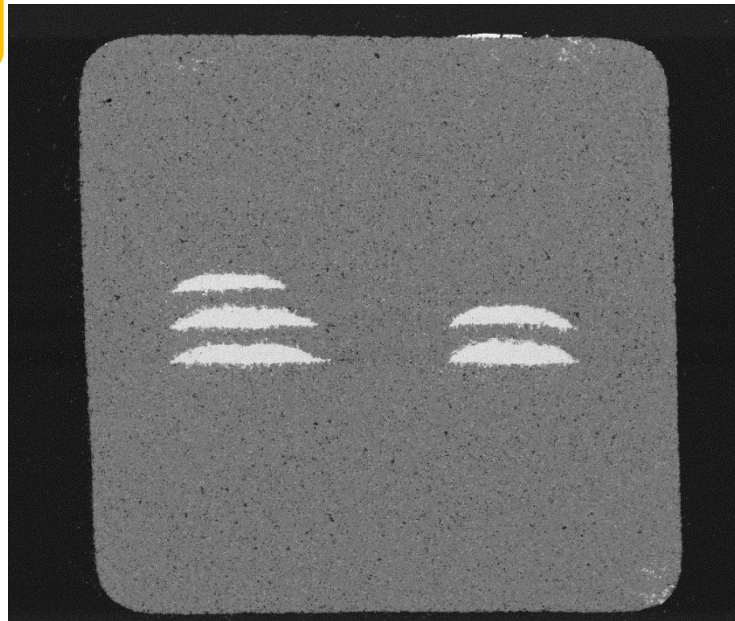
MAXECHO



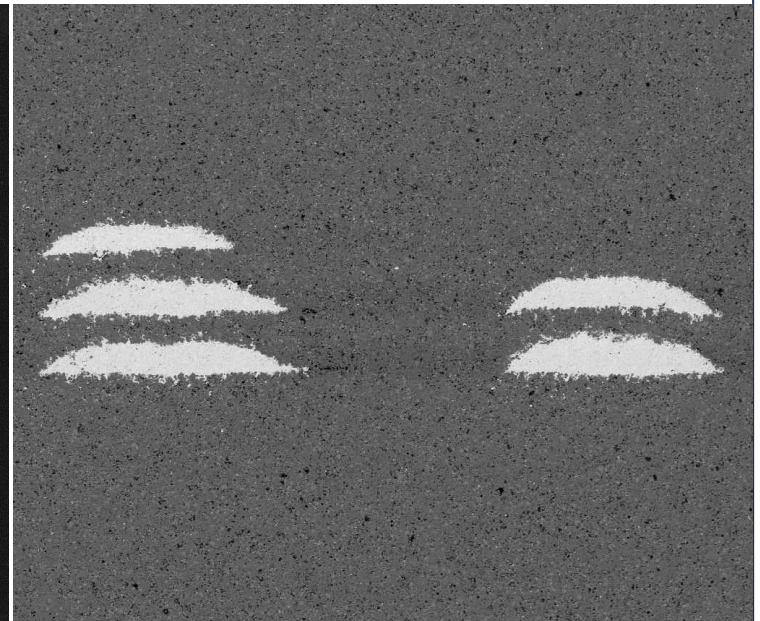


A社 1608

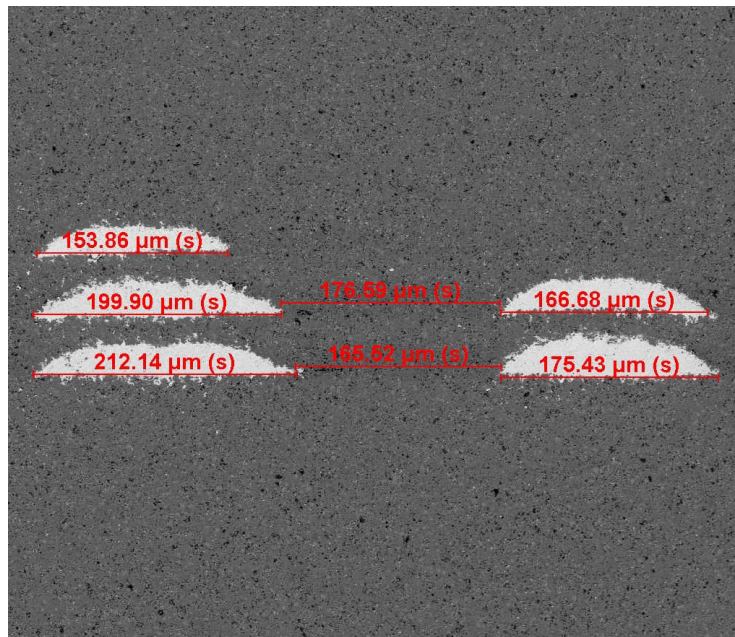
MAXECHO



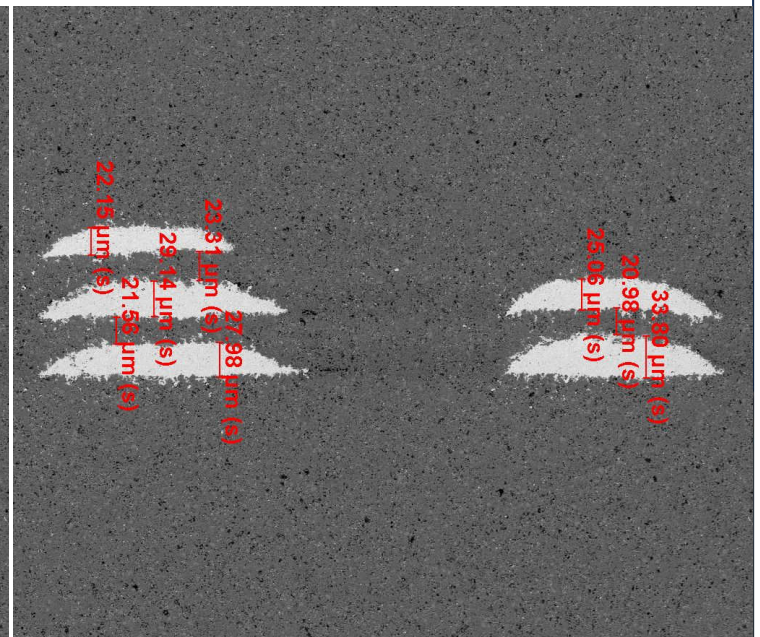
2/26/2016	HV	mag	tilt	WD	det	300 μ m
9:54:55 AM	10.0 kV	150 x	-0 °	9.2 mm	BSED	KETI



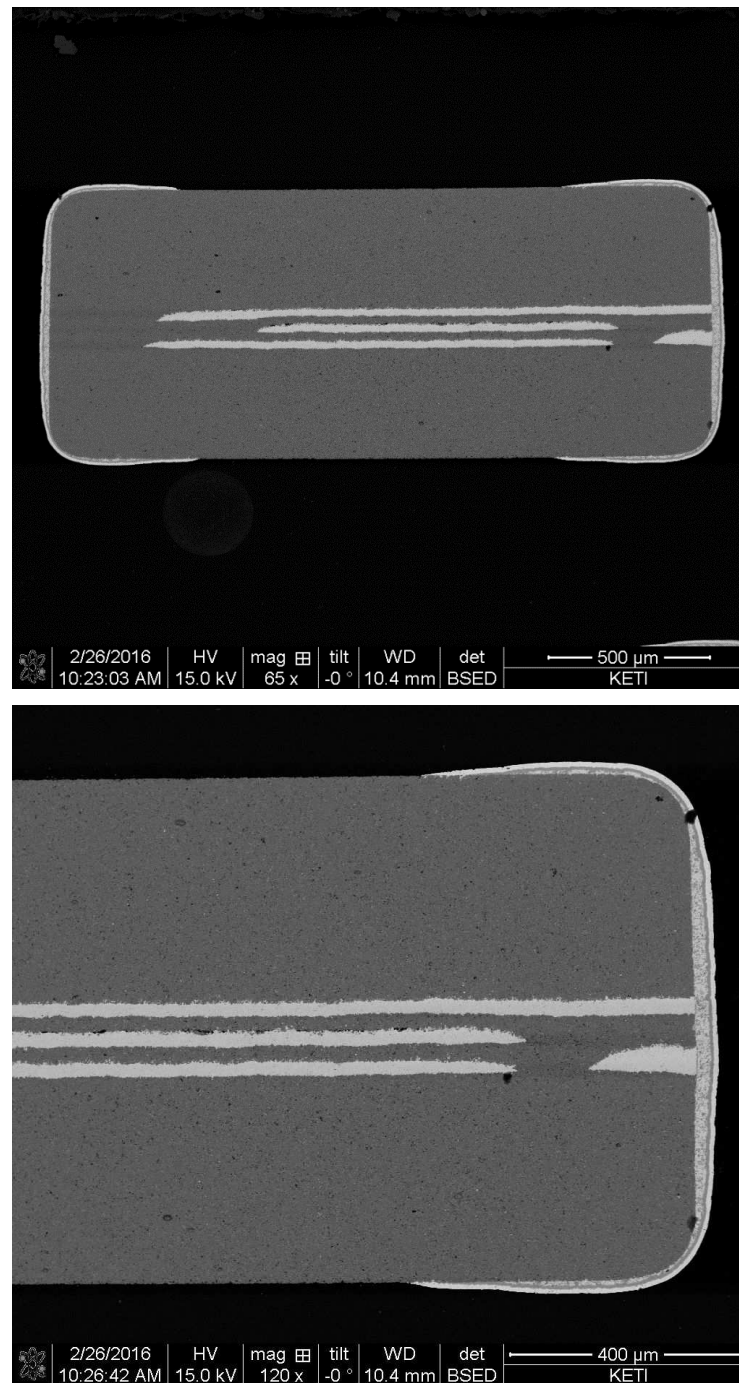
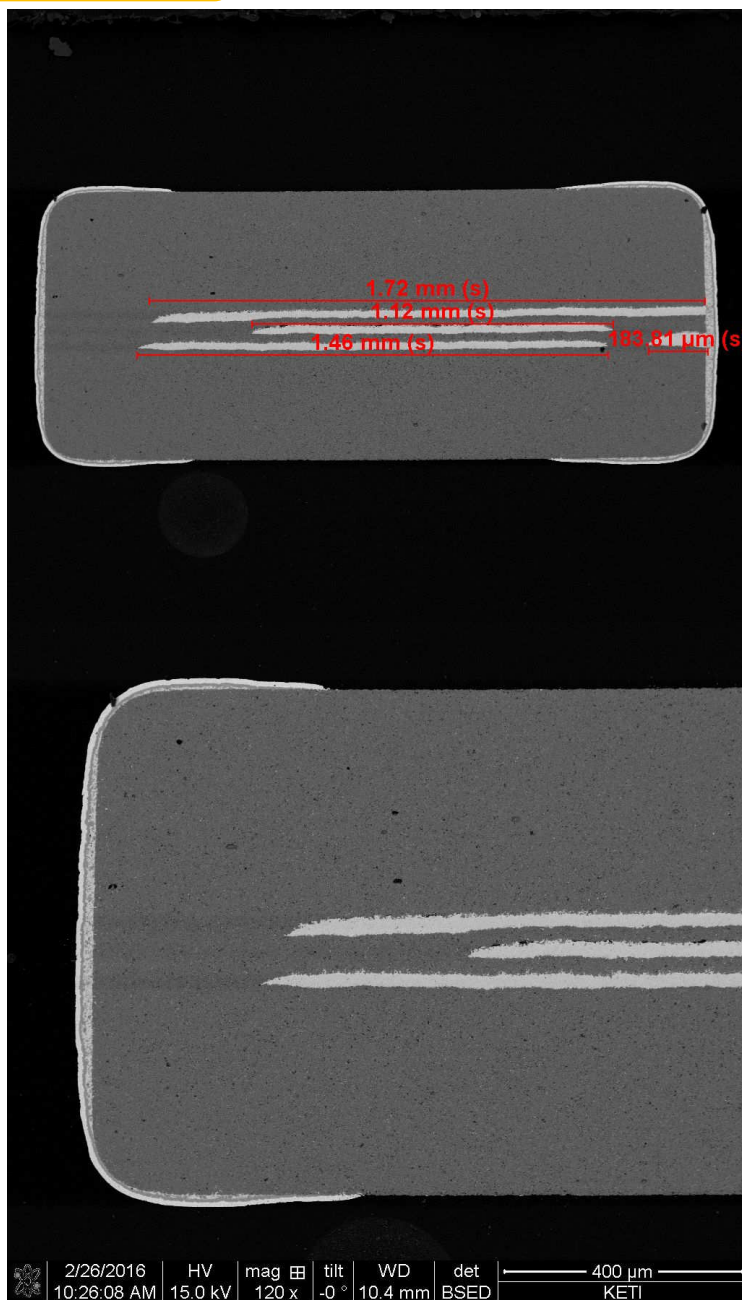
2/26/2016	HV	mag	tilt	WD	det	200 μ m
9:58:01 AM	15.0 kV	250 x	-0 °	9.2 mm	BSED	KETI



2/26/2016	HV	mag	tilt	WD	det	200 μ m
9:58:01 AM	15.0 kV	250 x	-0 °	9.2 mm	BSED	KETI

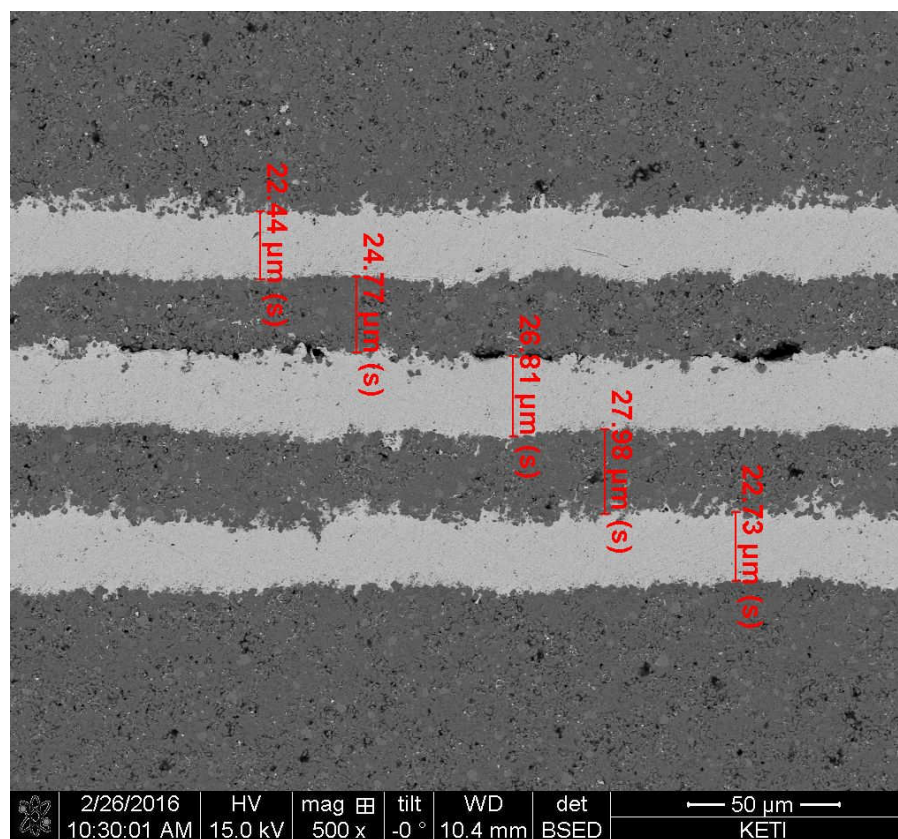
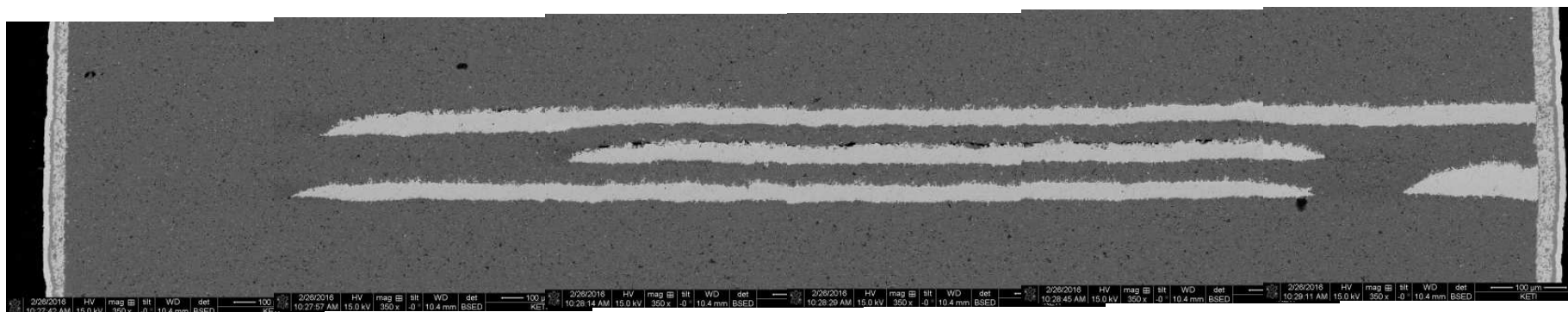


2/26/2016	HV	mag	tilt	WD	det	200 μ m
9:58:01 AM	15.0 kV	250 x	-0 °	9.2 mm	BSED	KETI



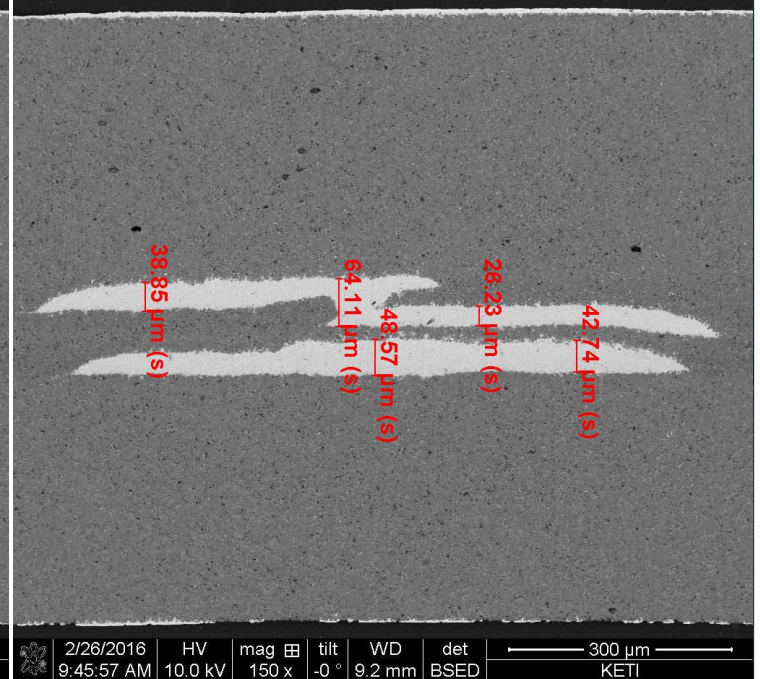
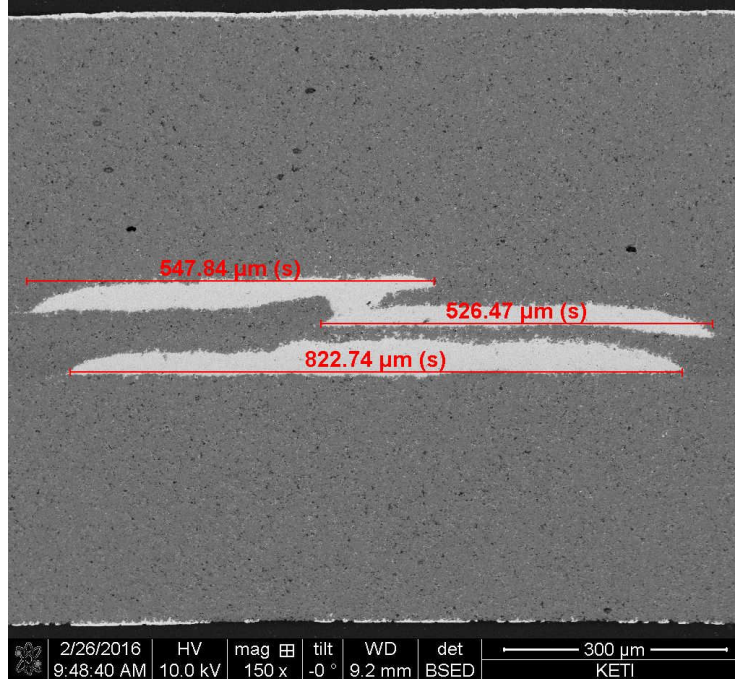
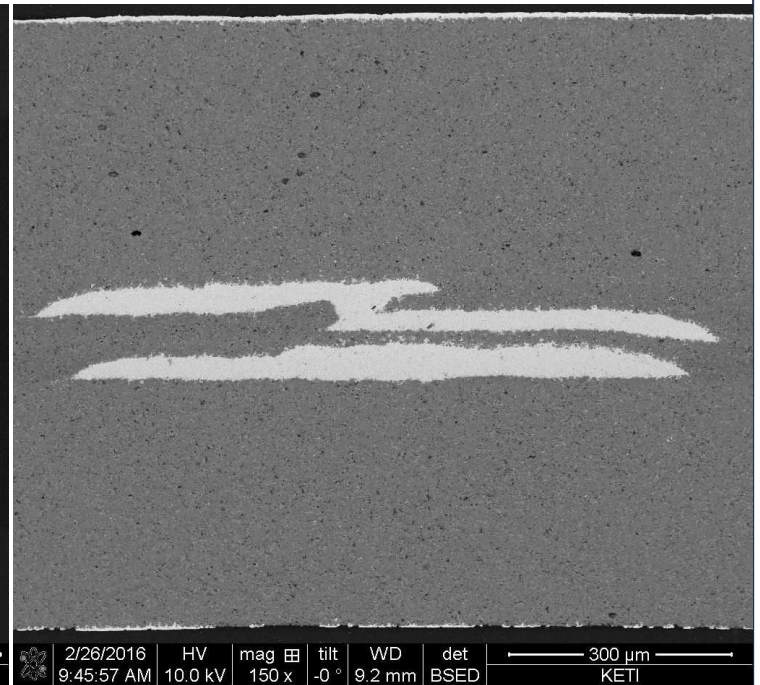
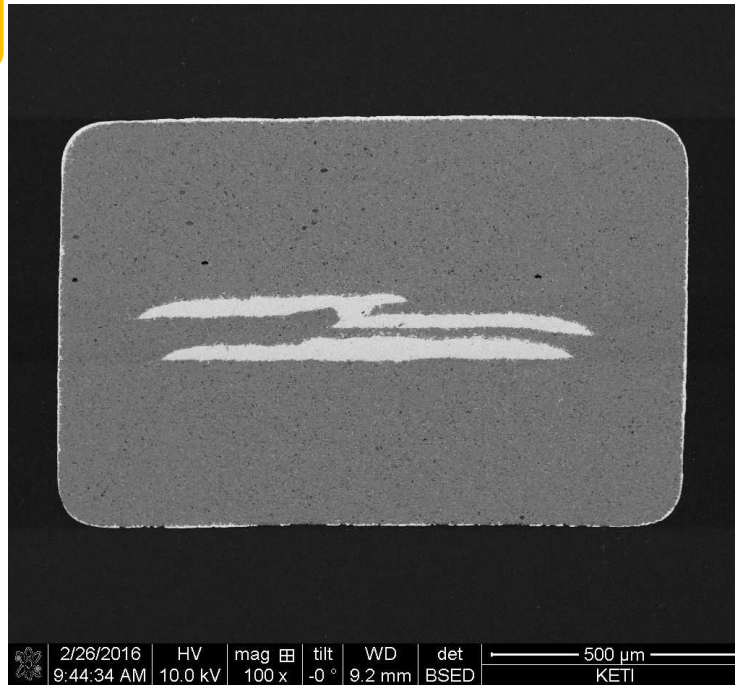
A社 2125

MAXECHO



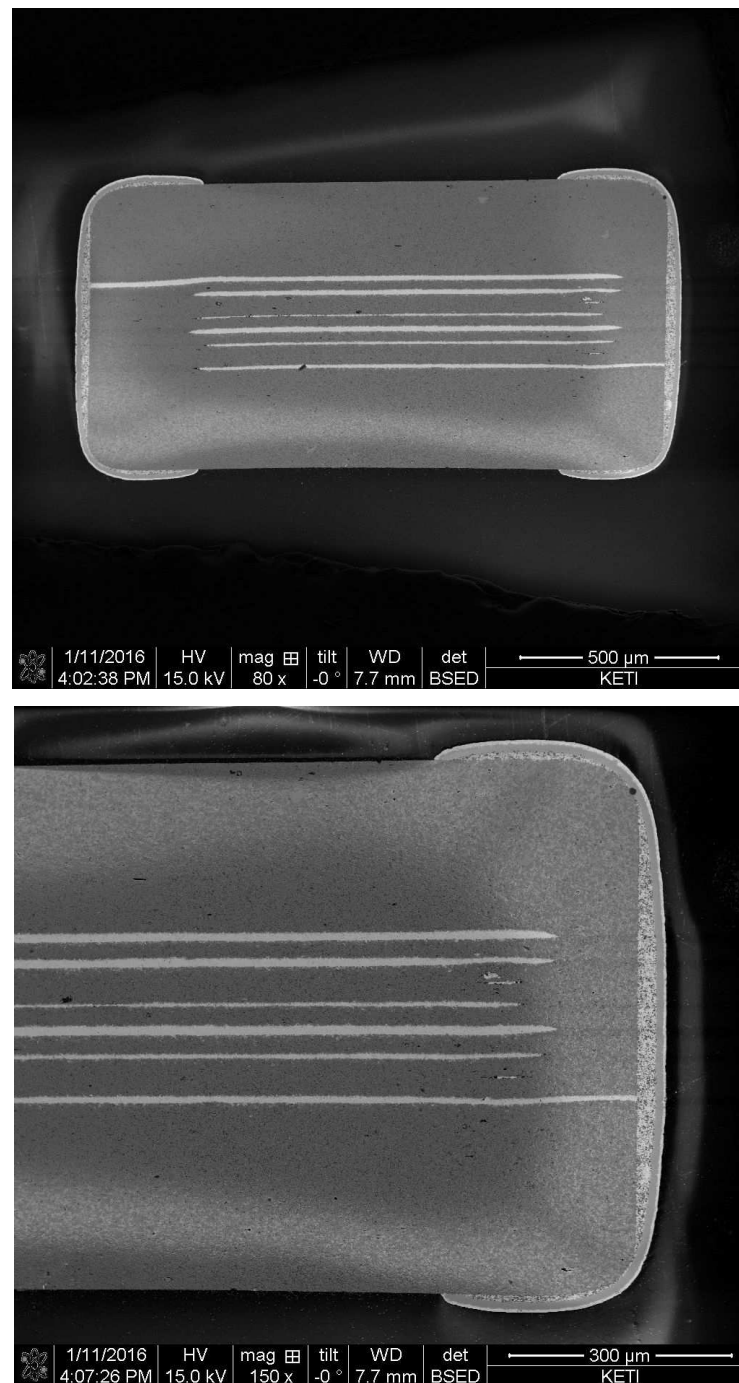
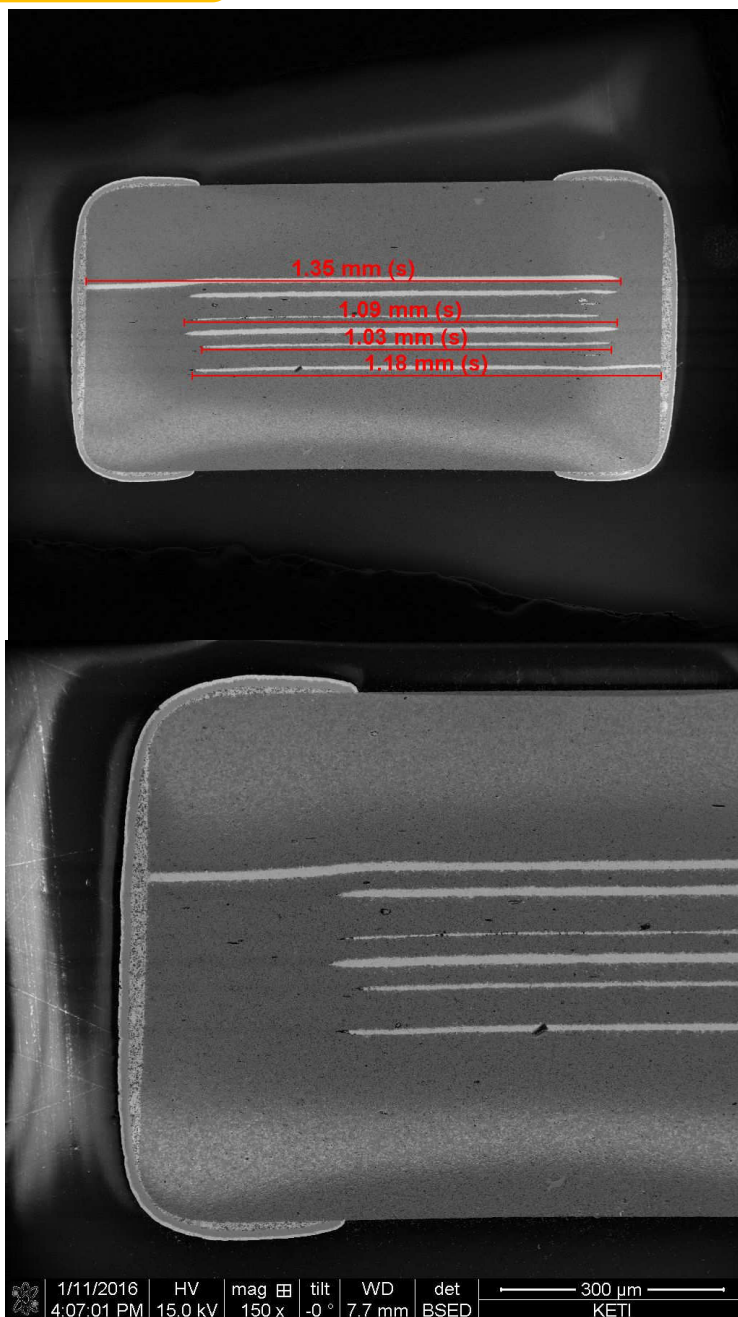
A社 2125

MAXECHO



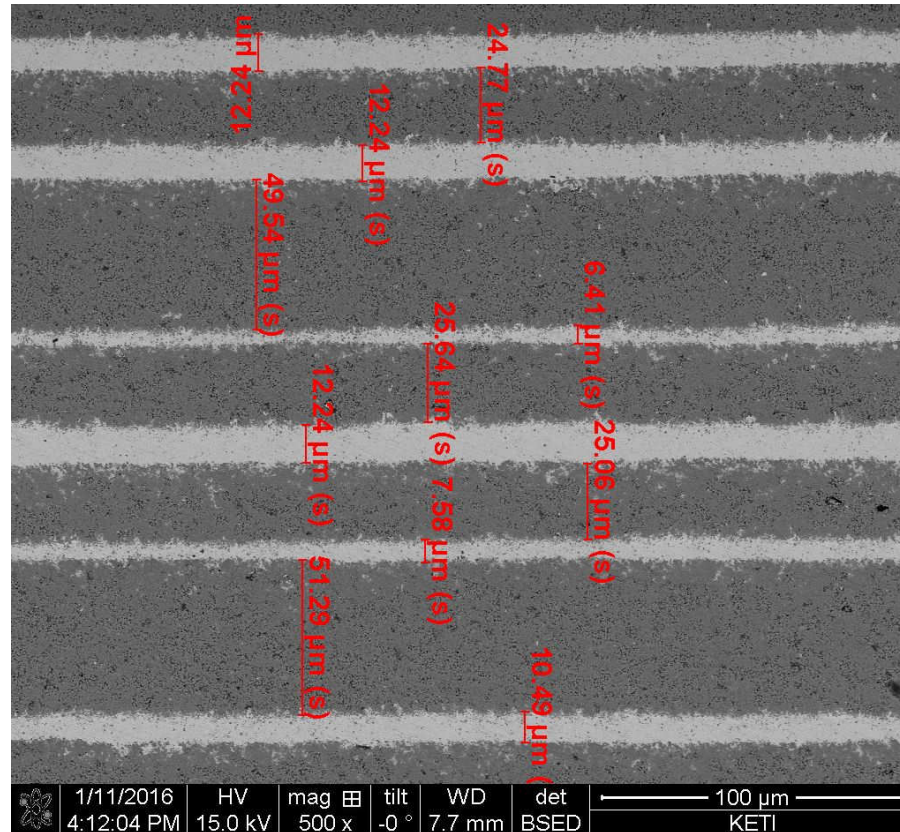
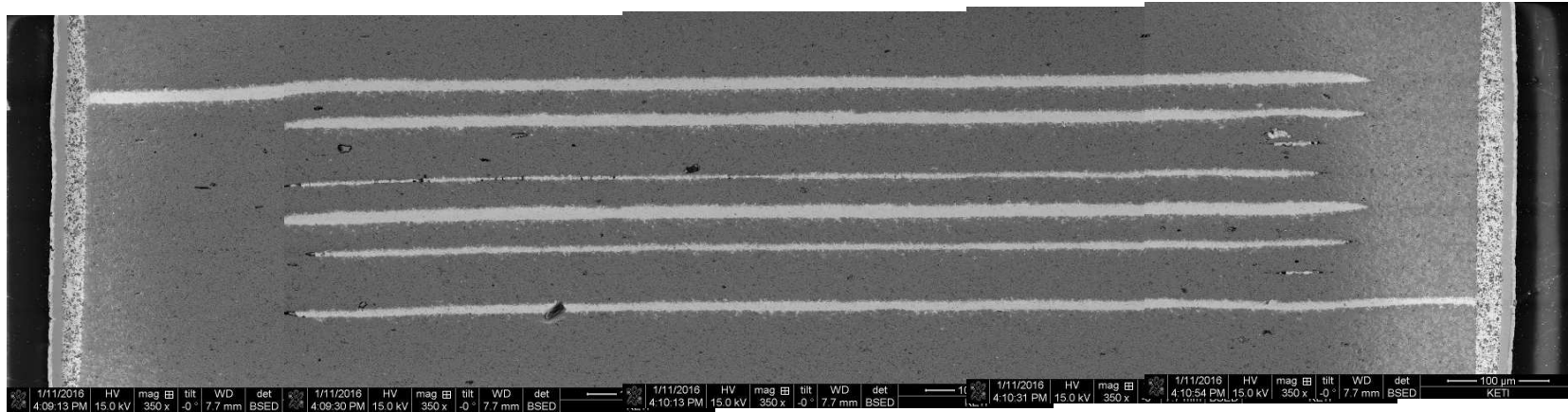
B社 1608

MURATA



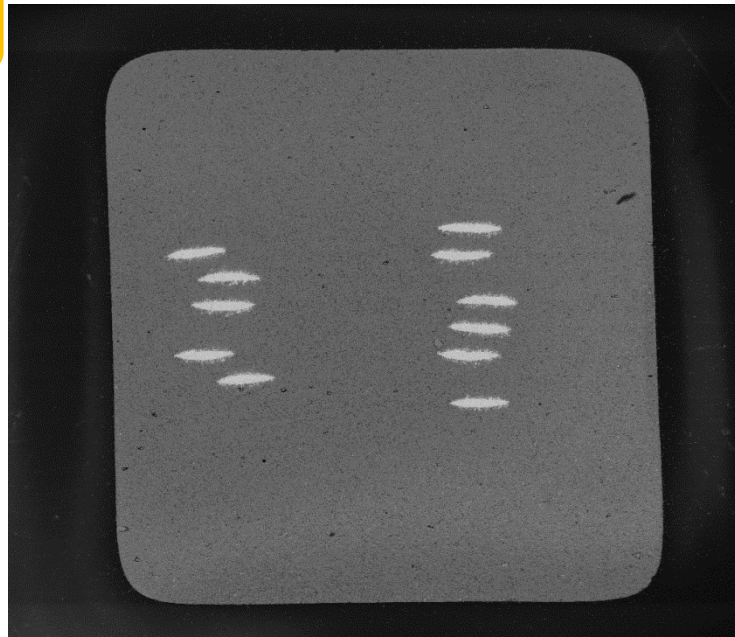
B社 1608

MURATA

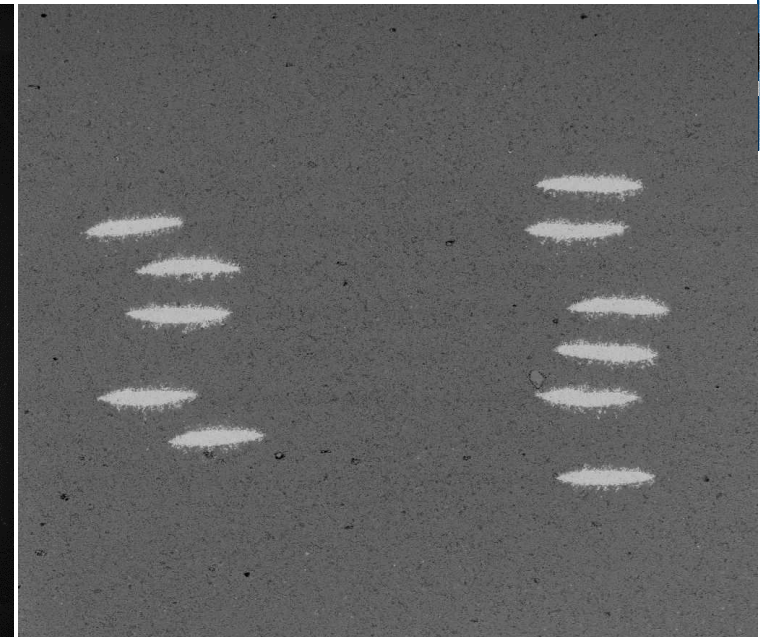


B社 2125

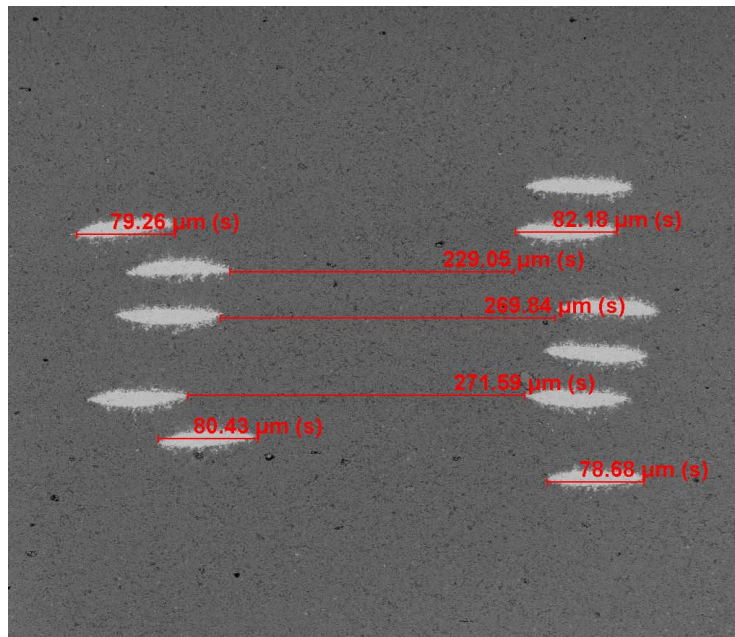
MURATA



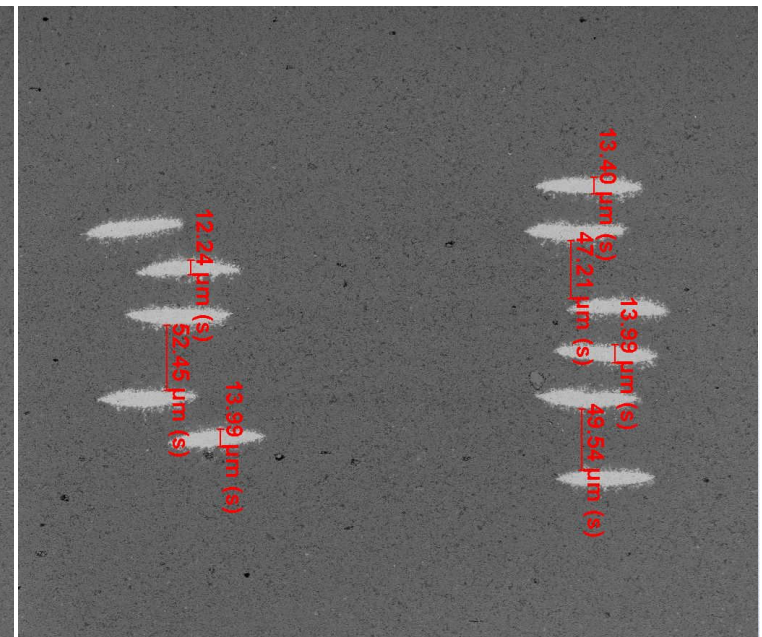
1/11/2016	HV	mag	tilt	WD	det	300 μm
6:24:11 PM	15.0 kV	150 x	-0 °	9.5 mm	BSED	KETI



1/11/2016	HV	mag	tilt	WD	det	200 μm
6:25:17 PM	15.0 kV	250 x	-0 °	9.5 mm	BSED	KETI



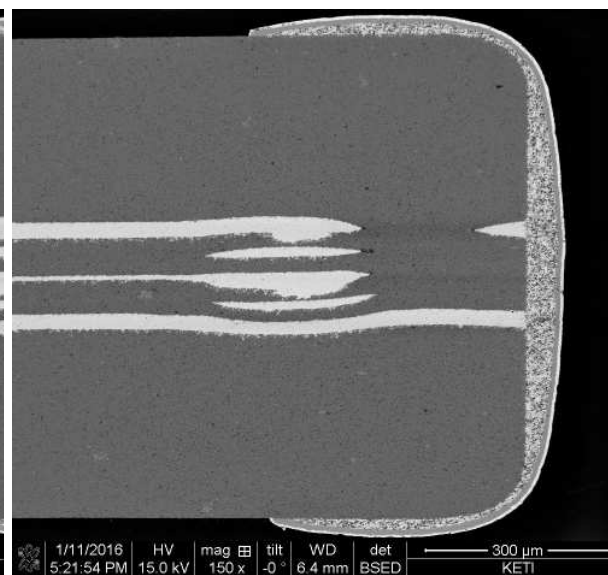
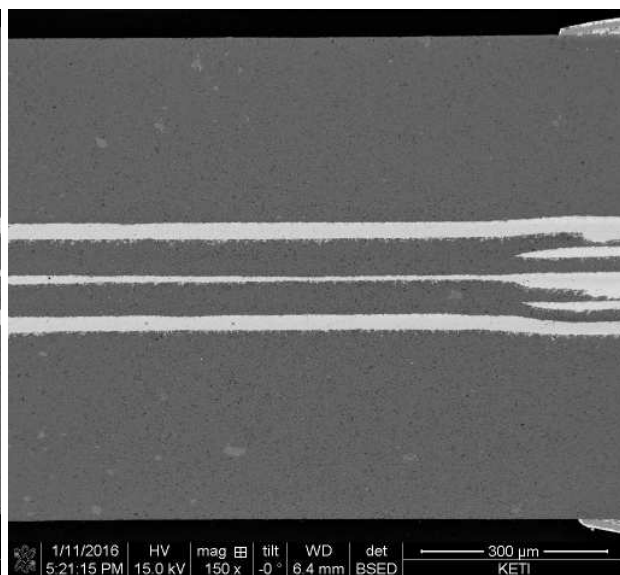
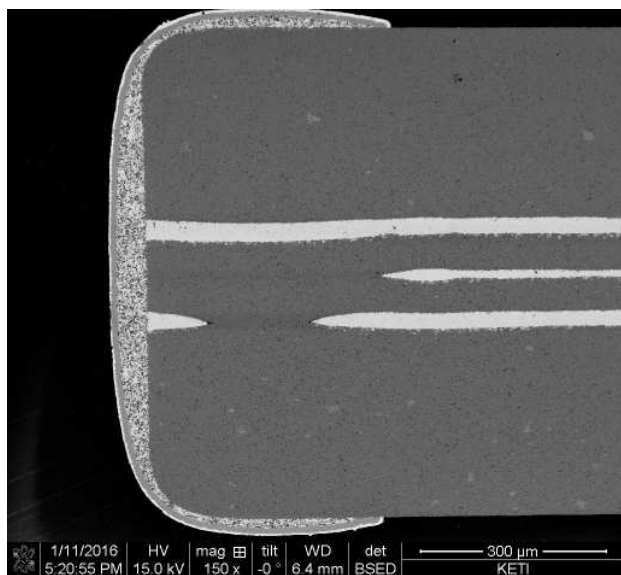
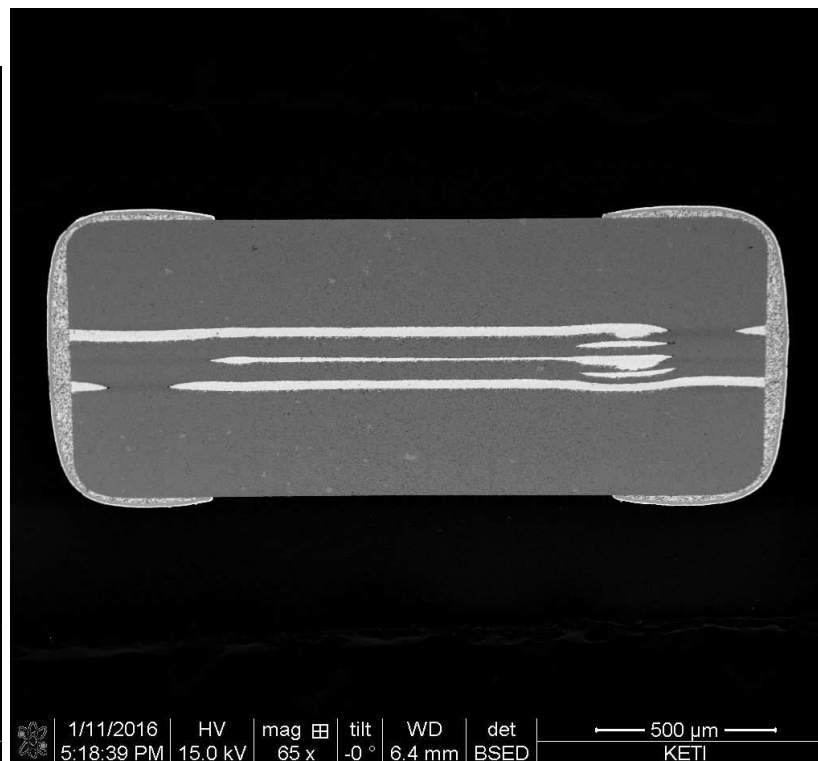
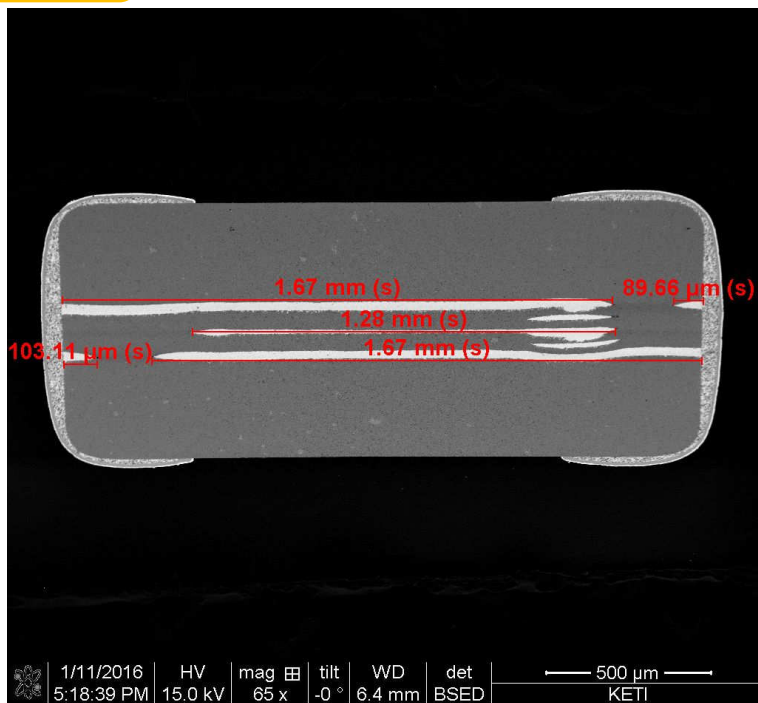
1/11/2016	HV	mag	tilt	WD	det	200 μm
6:27:18 PM	15.0 kV	250 x	-0 °	9.5 mm	BSED	KETI



1/11/2016	HV	mag	tilt	WD	det	200 μm
6:27:18 PM	15.0 kV	250 x	-0 °	9.5 mm	BSED	KETI

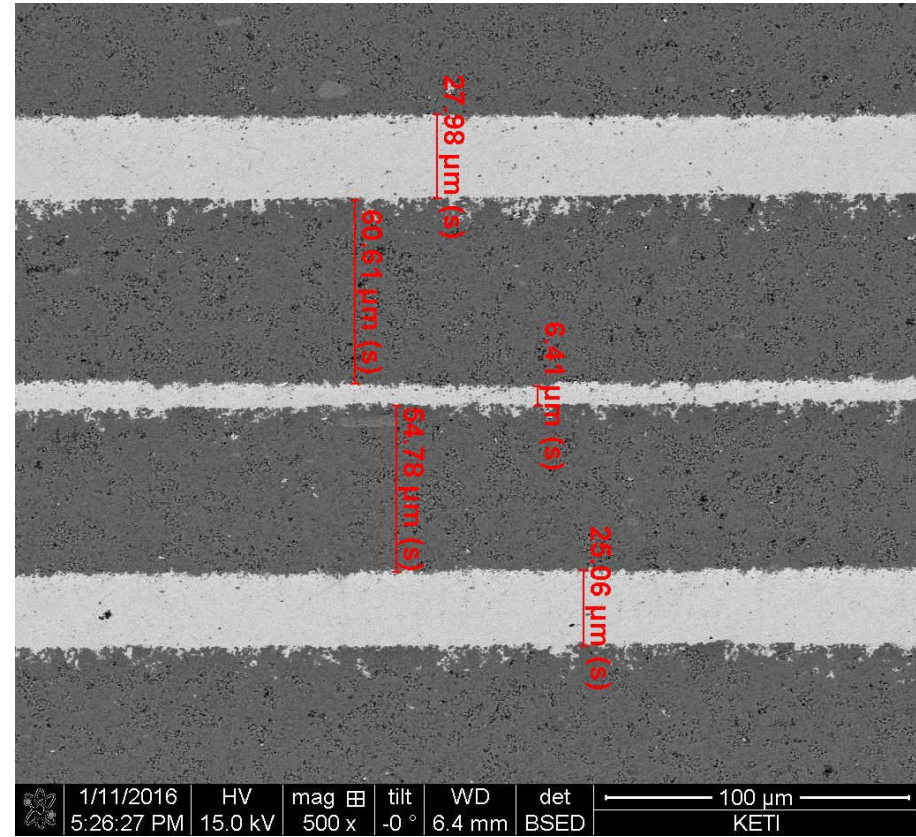
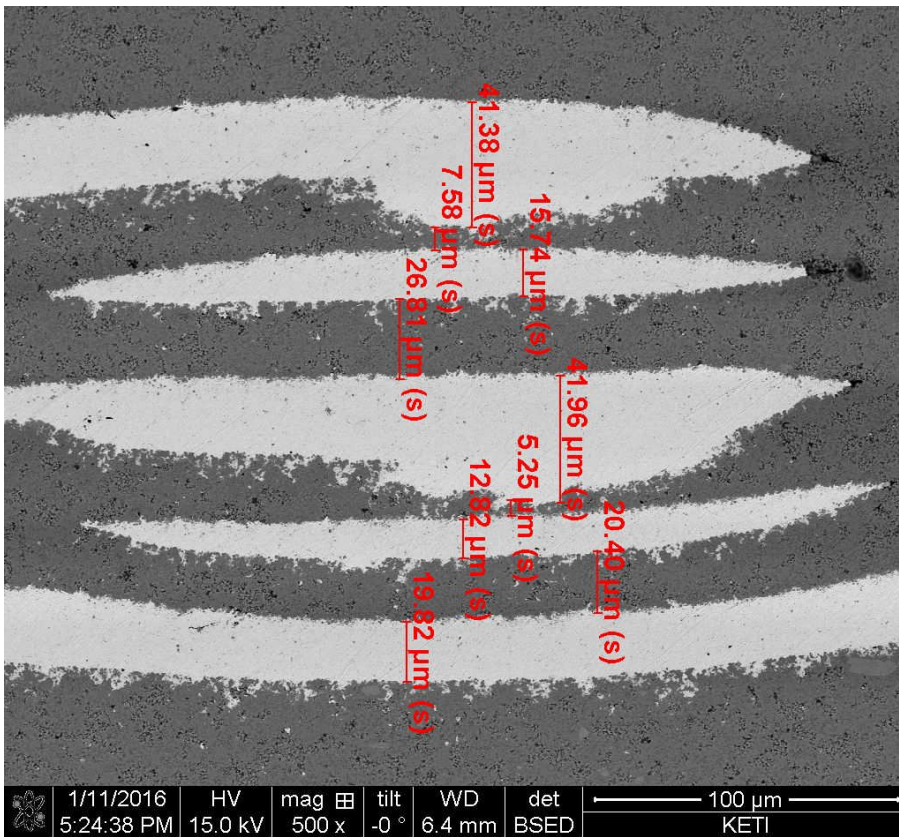
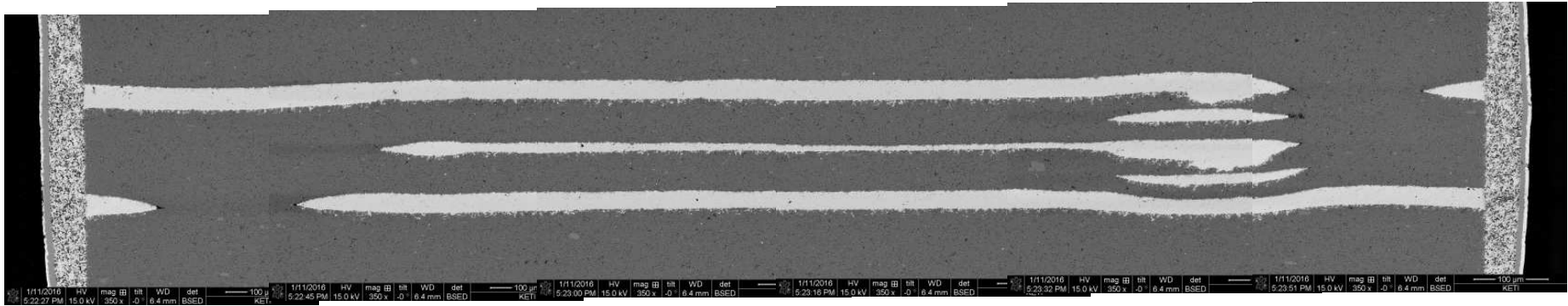
B社 2125

MURATA



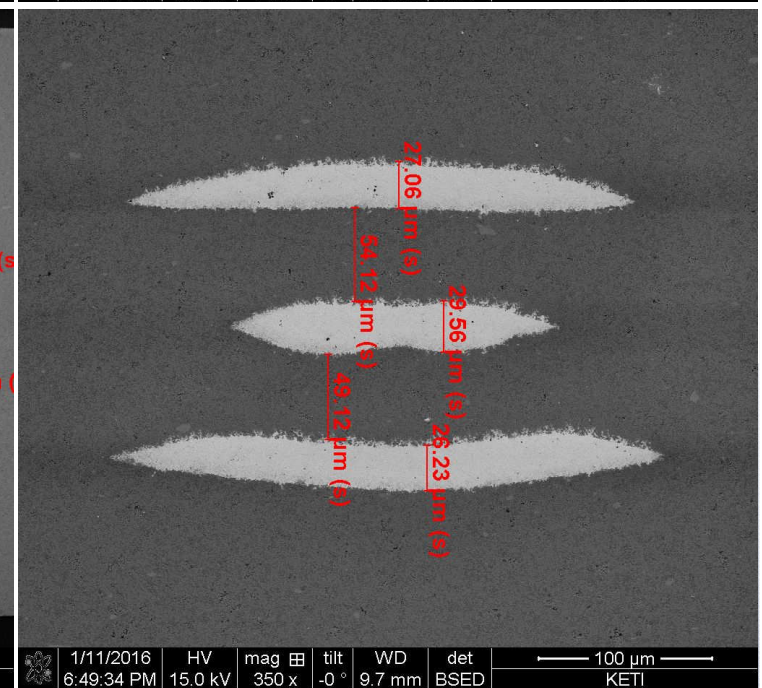
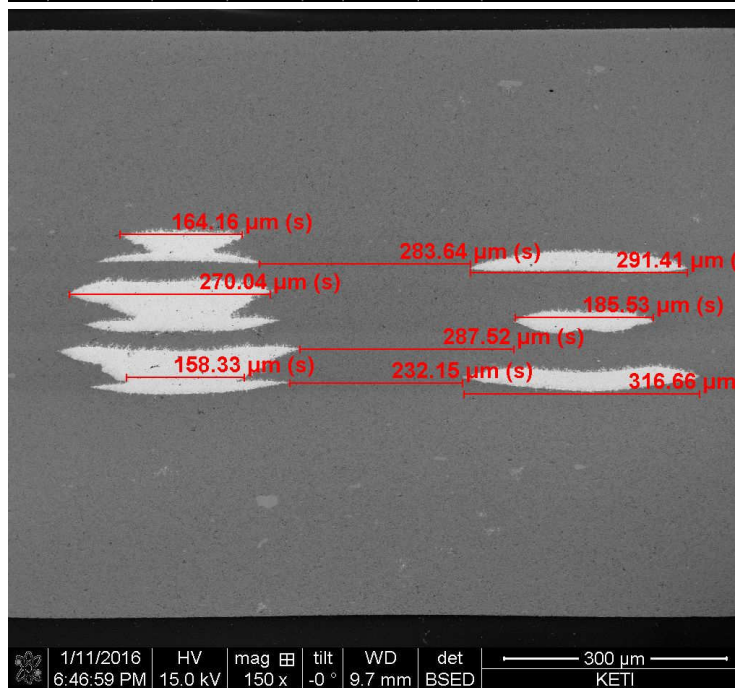
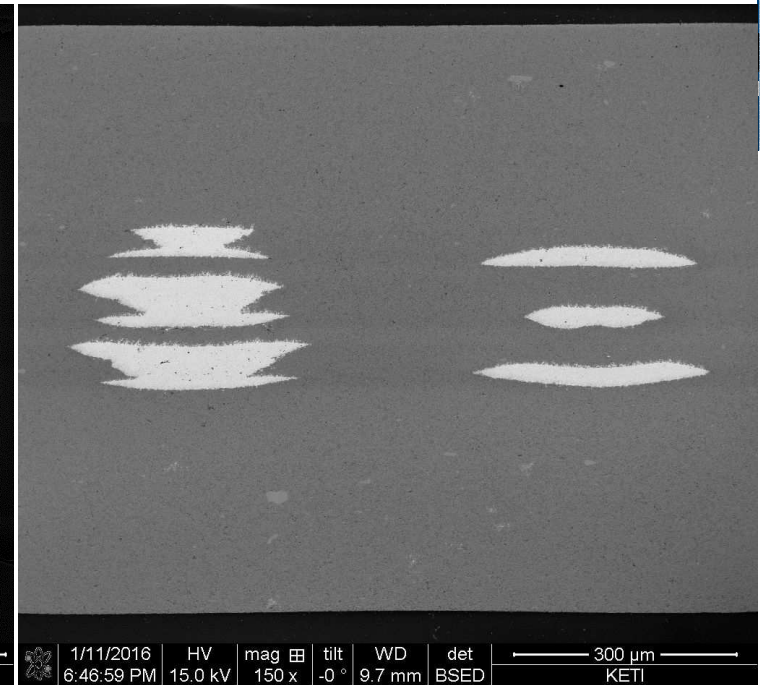
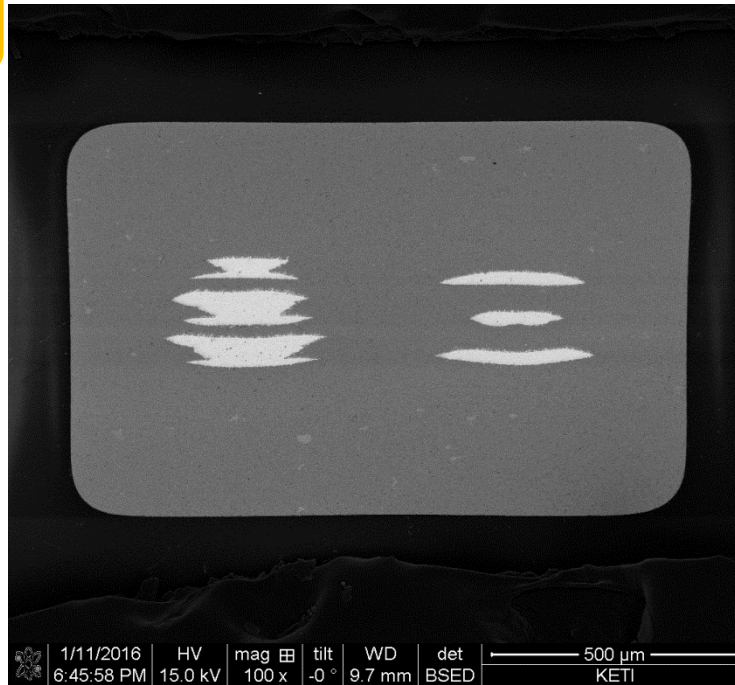
B社 2125

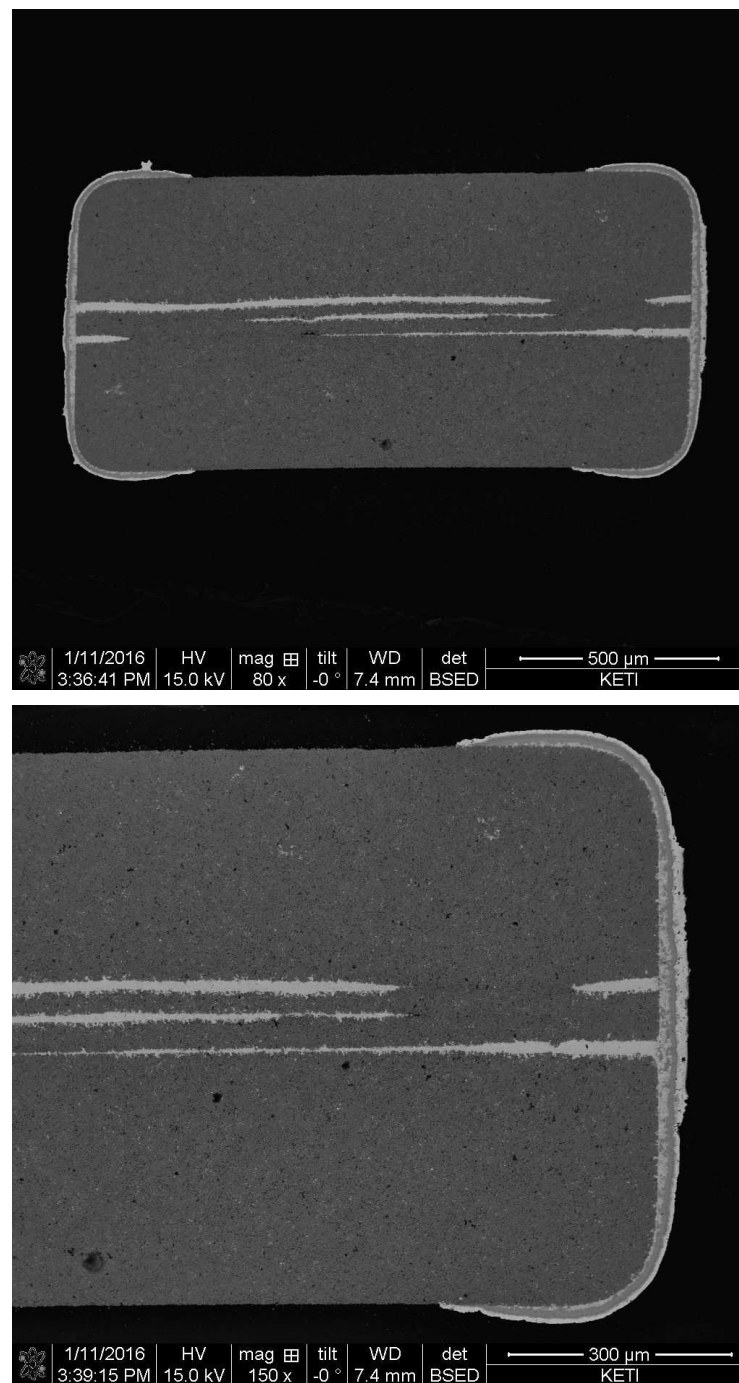
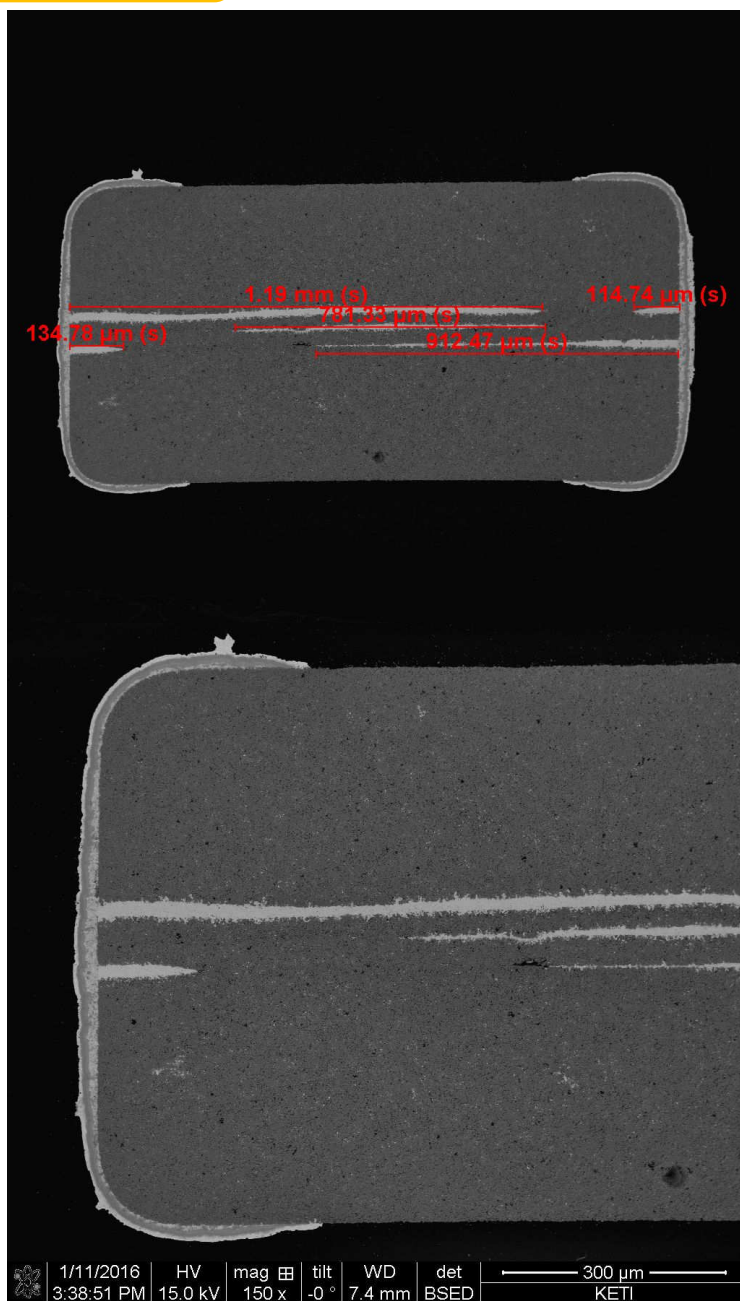
MURATA

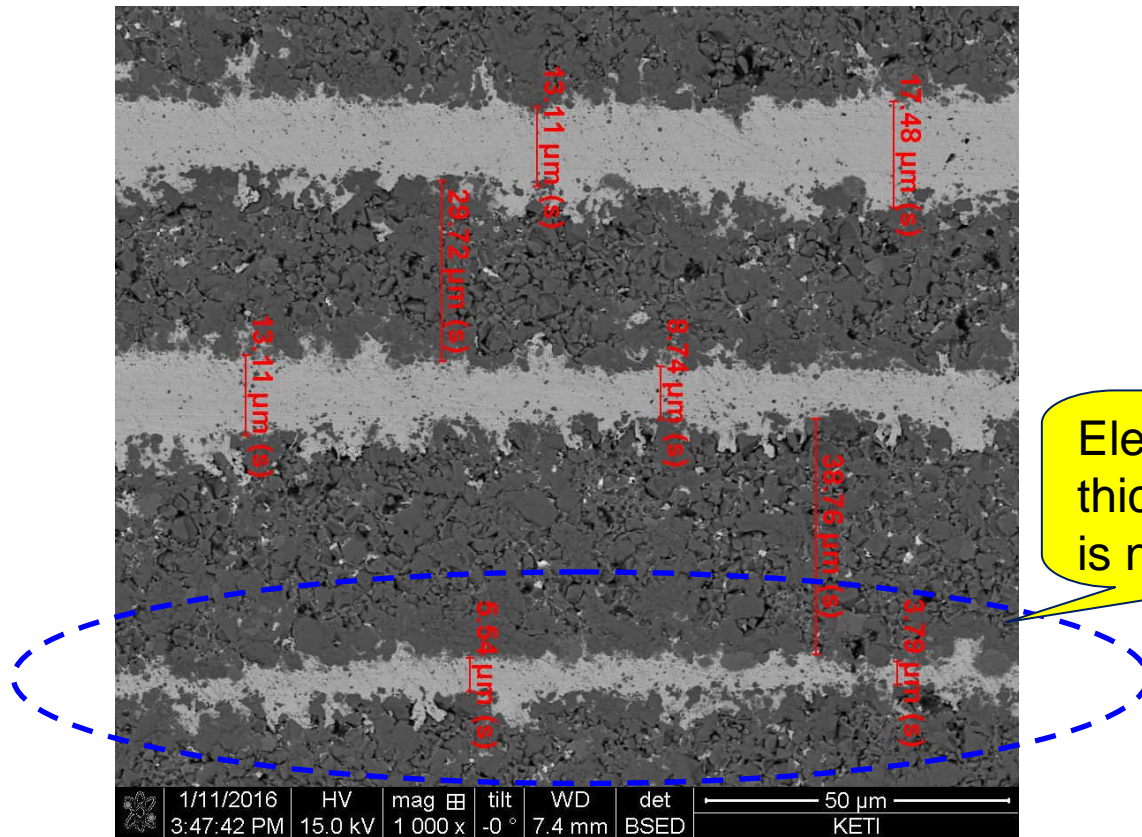
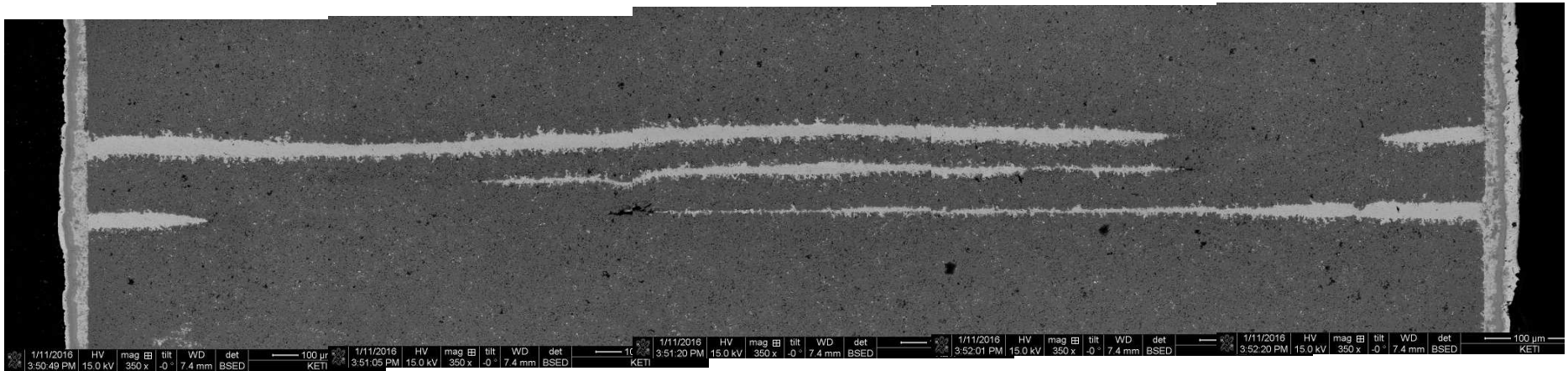


B社 2125

MURATA



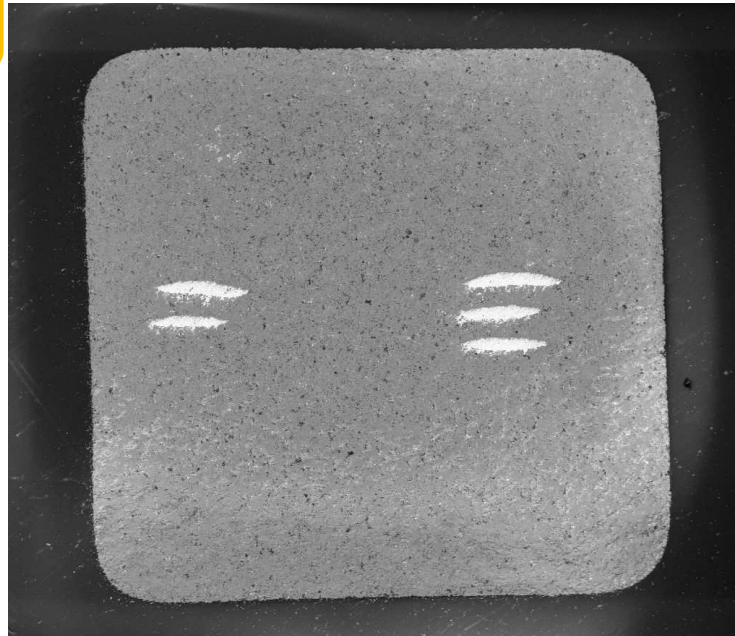




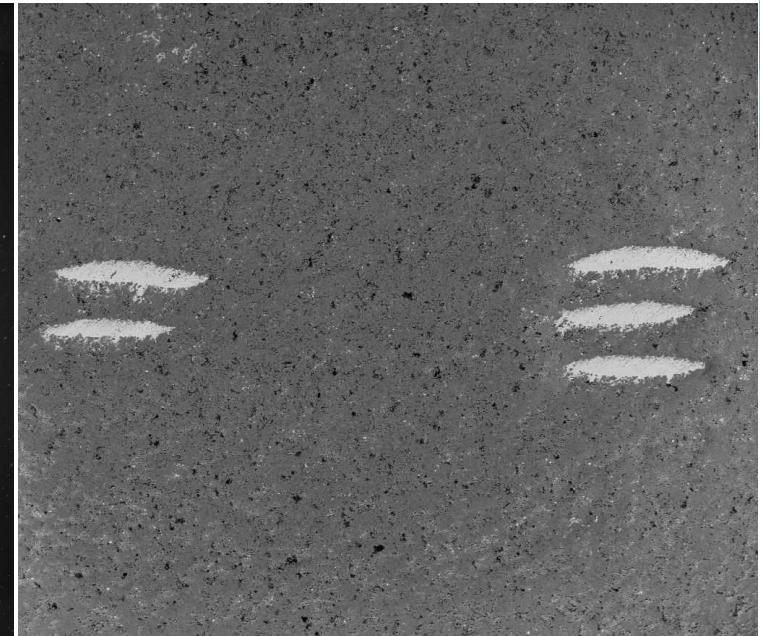
Electrode thickness level is not stable.

C社 1608

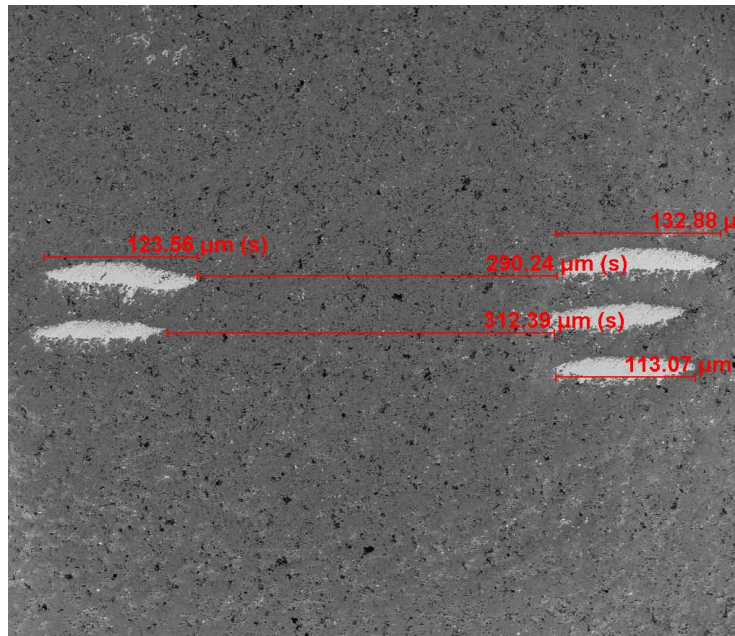
Samwha



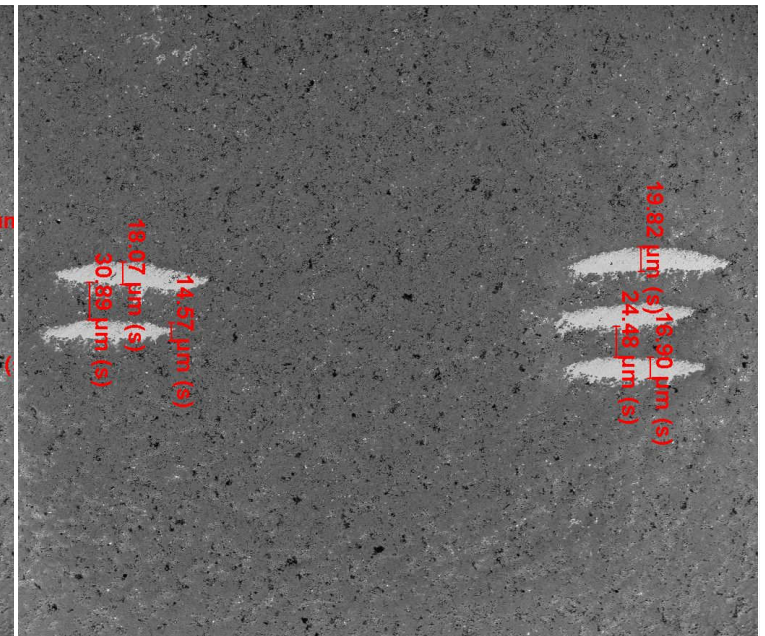
1/11/2016	HV	mag	tilt	WD	det	300 μ m
6:31:48 PM	15.0 kV	150 x	-0 °	8.3 mm	BSED	KETI



1/11/2016	HV	mag	tilt	WD	det	200 μ m
6:33:06 PM	15.0 kV	250 x	-0 °	8.3 mm	BSED	KETI



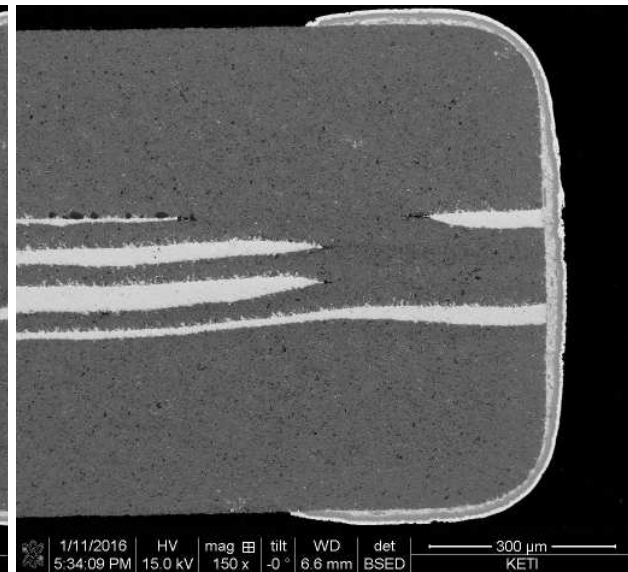
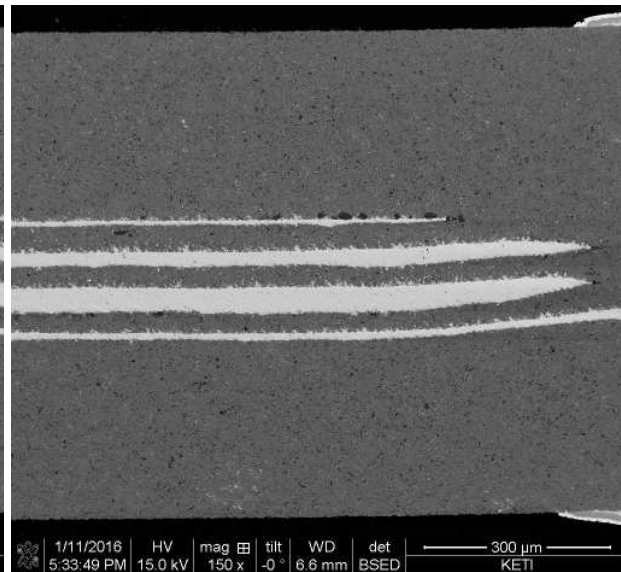
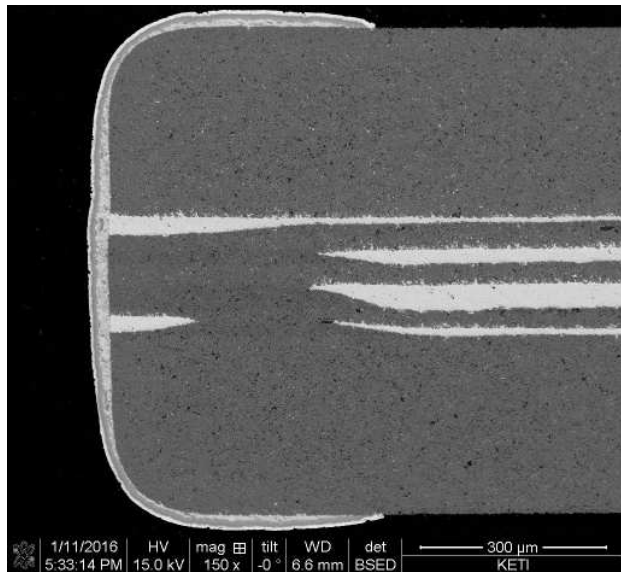
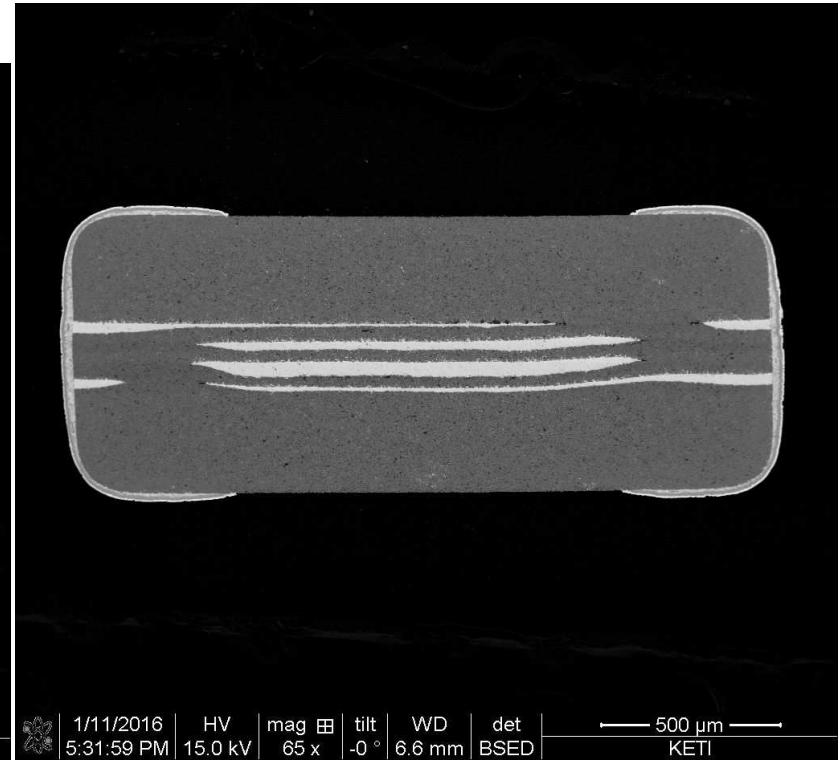
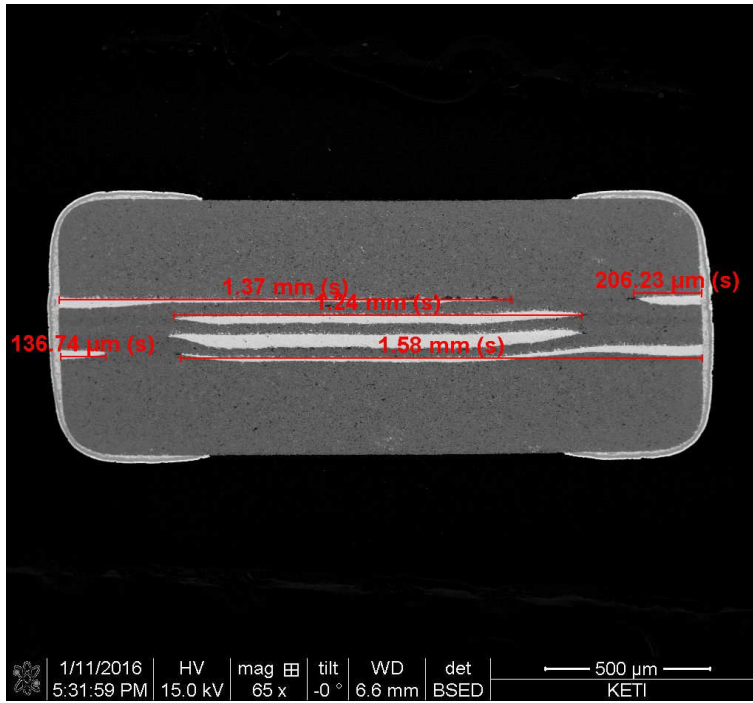
1/11/2016	HV	mag	tilt	WD	det	200 μ m
6:33:06 PM	15.0 kV	250 x	-0 °	8.3 mm	BSED	KETI



1/11/2016	HV	mag	tilt	WD	det	200 μ m
6:33:06 PM	15.0 kV	250 x	-0 °	8.3 mm	BSED	KETI

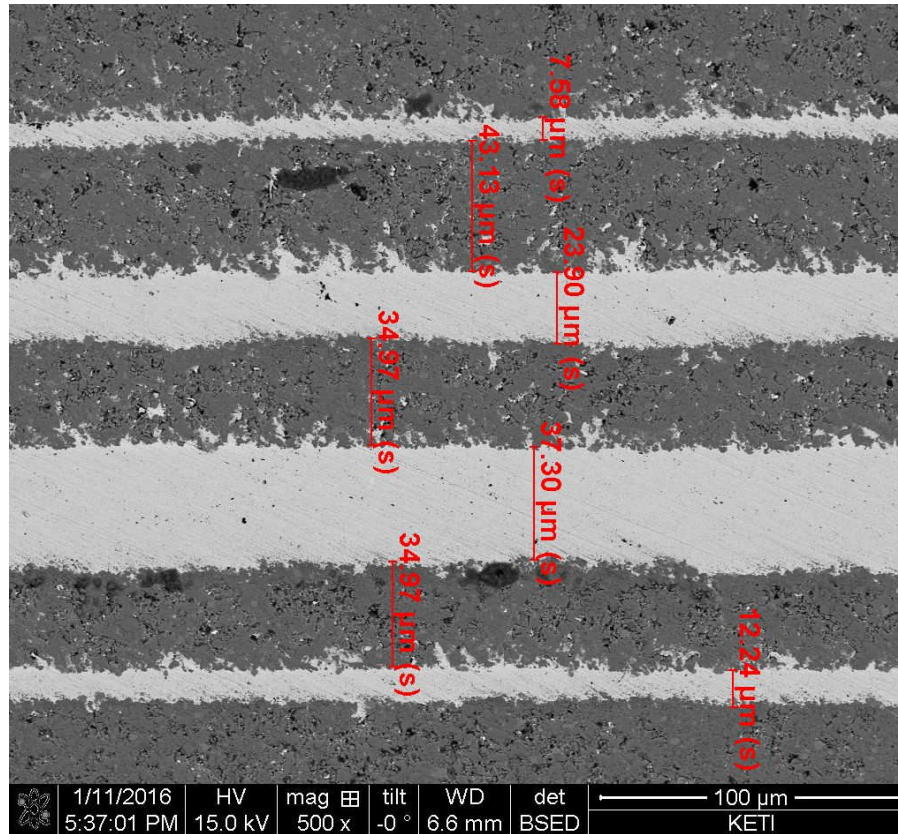
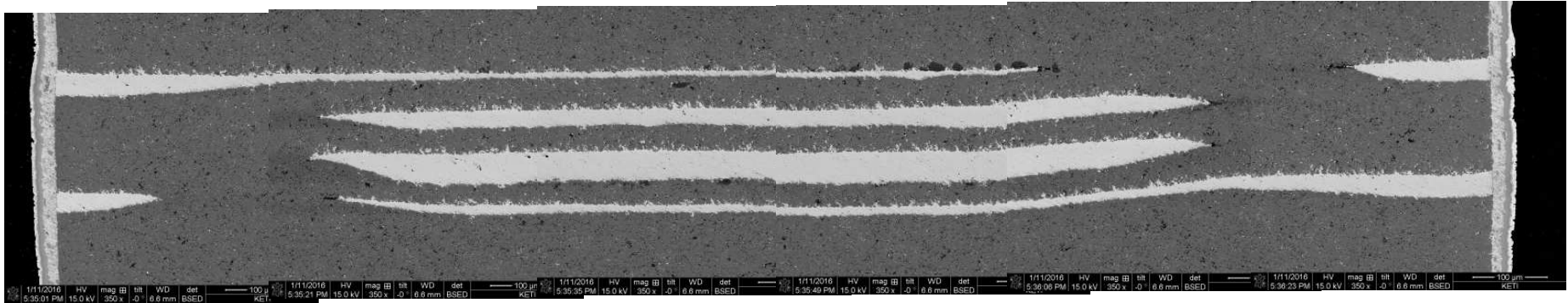
C社 2125

Samwha



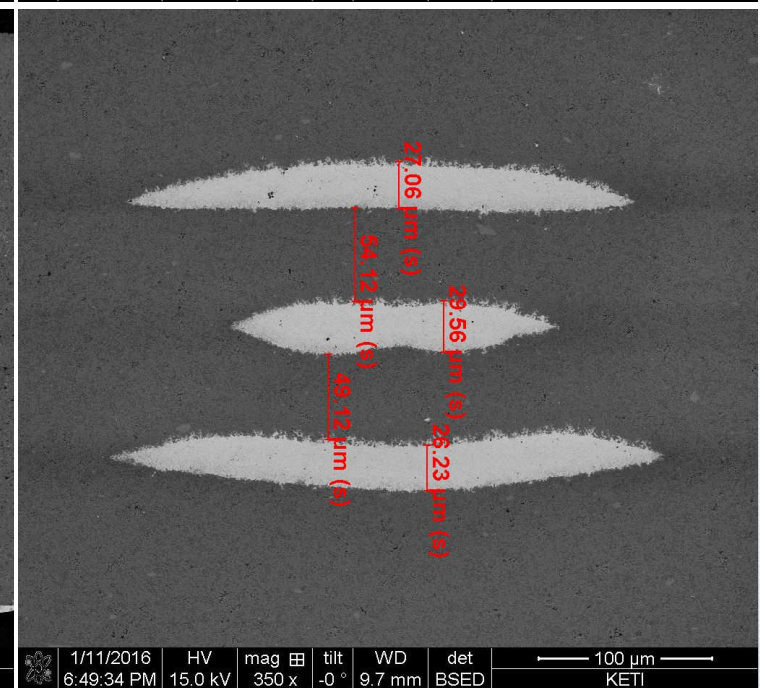
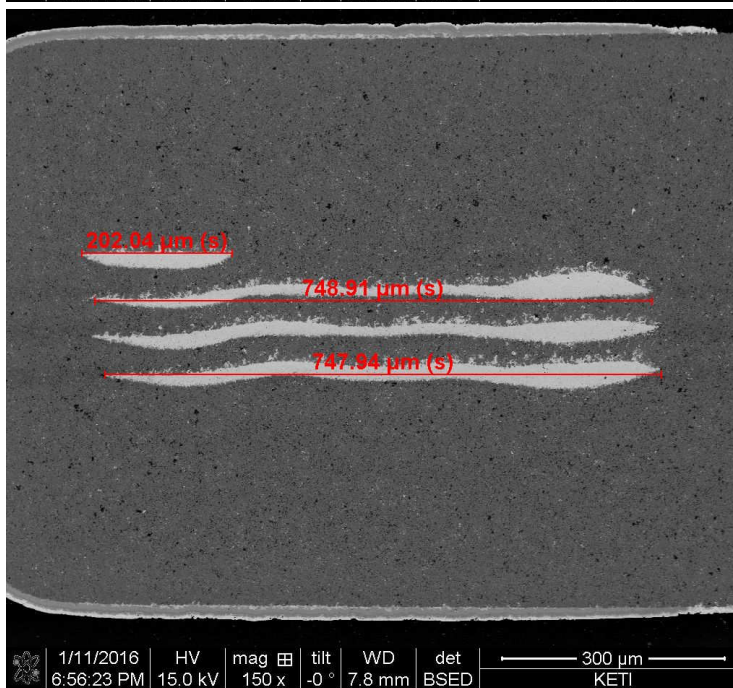
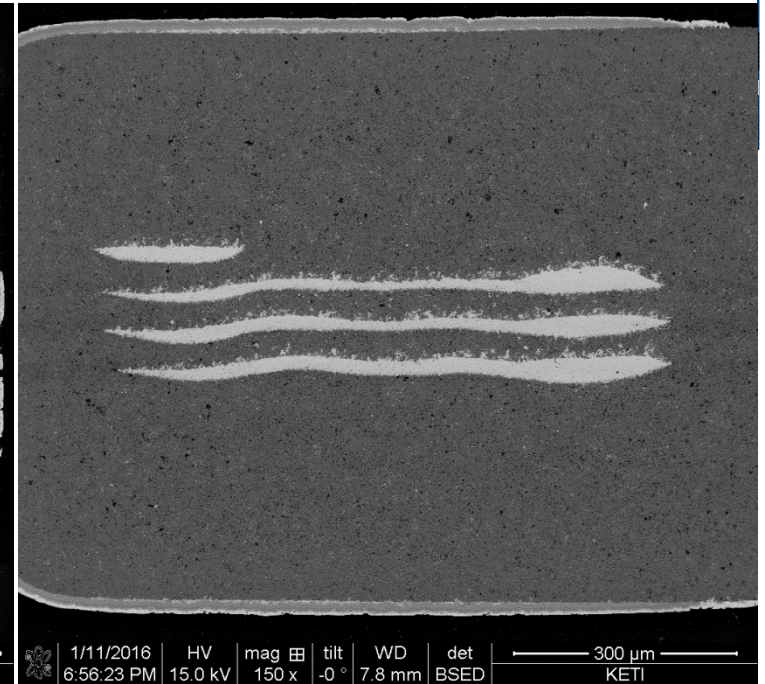
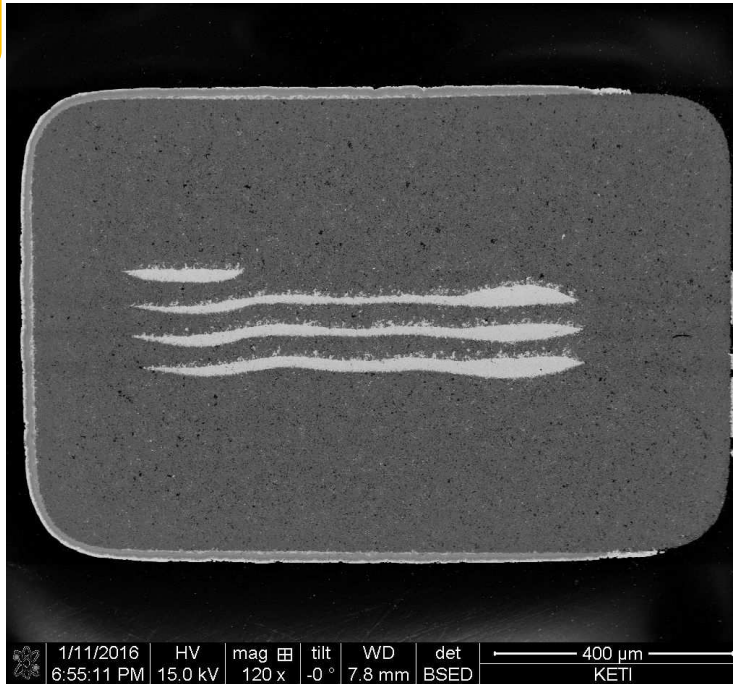
C社 2125

Samwha



C社 2125

Samwha



Summary and J-chip judgement

SEM analyses result

Sample	Electrode width	Layer interval	Total layer width
A1608	20.10um(min) Judg:○	22.33um(min) Judg:○	45.17um(min) Judg:○
A2125	22.44um(min) Judg:○	24.77um(min) Judg:○	47.21um(min) Judg:○
B1608	6.41um(min) Judg:○	24.77um(min) Judg:○	37.0um(min) Judg:○
B2125	6.41um(min) Judg:○	54.78um(min) Judg:○	79.84um(min) Judg:○
C1608	3.79um(min) Judg:△	29.72um(min) Judg:○	42.84um(min) Judg:○
C2125	7.58um(min) Judg:○	34.97um(min) Judg:○	50.71um(min) Judg:○

<J-chip comment>

Company **C1608** Electrode is so thin, if compare to anther one.
And also, **C1608** layer thickness level is not stable.